

Announcing
 The
 Grand Opening

of
 V. U. YOUNG'S

**PALACE
 THEATRE**

"Marion's Only Atmospheric Theatre"

Thursday Evening
 August 30th

AT
 HALF AFTER SIX



Theater Expected to Contribute to City's Business Progress

HOUSE WILL DRAW TRADE 30 MILES

Real Estate Man Points to Results Already in Evidence

IS WELL ADVERTISED

Palace Will Be Only Theater of Its Type in This Vicinity

In addition to adding vastly to Marion's importance as an entertainment center, the Palace theater is expected to contribute materially to the city's progress and business advancement.

While West Center st. will receive the chief benefit as far as increase of realty values is concerned, the entire city is certain to profit in a proportionate degree, according to the views of those familiar with factors entering into community development.

Results are already in evidence. An example, a local real estate man states that negotiations are now under way to lease ground near the theater site at a price between \$700 and \$800 a front foot. A year ago, the real estate man says, this same land could have been leased at from \$500 to \$600 a foot.

The Palace theater management expects to draw its patronage from territory extending 30 miles or more from Marion in all directions. The theater will be advertised throughout that territory and this means advertising to a large extent from shoppers included among the theater-goers.

The fact that the Palace will be the largest theater and the only one of its type in this section of the state, and that he management will present programs similar to those in the large city houses is regarded as sure to attract extensive patronage from outside points.

All-Talking Comedy. Los Angeles, Aug. 28.—Charles C. Burr will star "A Pair of Sixes," starring Johnny Hines, Sept. 15, the first all-talking feature comedy.

NOTED ARCHITECT DESIGNS THEATER

John Ebersson, of Chicago, one of the outstanding theater architects of the country, who designed the Palace in Marion, is given the credit for originating the atmospheric type of theater. For the last 28 years Mr. Ebersson has been designing theaters throughout the country, having made plans for more than 150. He obtained his art education in Dresden, Saxony and Vienna, Austria. E. R. Evans represented Mr. Ebersson during the course of the construction of the Marion playhouse.

YOUNG CHAIN NOW HAS TEN THEATERS

V. U. Young Began Building Career 10 Years Ago in Gary

The highest standard of entertainment, the minimum of price of admission, combined with honest business ethics are the basic foundations that have, in a measure, been responsible for the remarkable and justified growth of the Young Amusement Co. from operators of one small theater to the present large chain.

Not 10 years ago V. U. Young, general manager of the Young Amusement Co. and builder of the new half million dollar Palace theater to be opened to the public of Marion Thursday, opened the Orpheum theater at Gary, Ind. From this modest start the company has progressed with rapid strides and today has a chain of theaters reaching from the Chicago to the Cleveland districts.

The Young Amusement Co. has theaters in Gary, and Kokomo, Ind., others in Canton and Marion and a new million dollar theater under construction in Anderson, Ind. The company operates, in all 10 theaters.

The new Marion house will bring to this district not only a new mode of entertainment, complete in every detail, but will also introduce for the first time a unique and beautiful type of theater construction, that of the atmospheric interior.

John Ebersson of Chicago, architect.

EXECUTIVE HEADS OF YOUNG AMUSEMENT CO.



C. J. WOLF, Wheeling, W. Va. President



V. U. YOUNG, Gary, Ind. Secretary-Treasurer and Gen'l Manager

first brought this new type of theater building to the attention of the builders when he designed the Palace theater of Gary, Ind., for the Young Amusement Co. Since this time his design has been copied by many other builders throughout the country. The Marion Palace represents the perfection of this art of construction.

ONE "ABIE" ON ROAD

There will be at least one company of "Abie's Irish Rose," stage version, on tour this season. It opens at Trenton, N. J., next Monday, with Wilmington, Del., next. Both are week bookings. The show will play one-nighters on tour in New Orleans, thence working west to the coast. The "Abie" route is expected to extend for at least 40 weeks.

INTERIOR OF HOUSE PERFECT IN DETAILS

Spanish Design and Atmospheric Effect Make Scene of Rare Beauty

ART MASTERPIECE

Decorations, Architecture and Furnishings Blend to Form Entrancing Picture

Forget for a few minutes that you are reading a copy of your evening paper. Allow your imagination to carry you to the gentle slope of a moonlit Spanish hill.

Before you rise a vine covered garden wall, broken here and there with graceful arches. Through the archways spreads the soft light of a harvest moon and the dim glow casts shadows over the somber colored walls.

Overhead myriads of stars are twinkling in an azure blue sky and soft, fleecy clouds are drifting gently with the breeze.

Picture all this in your mind and you have a fair conception of the interior of the Palace theater—Marion's new half million dollar playhouse.

Spanish in Design

The new theater is Spanish in design in all its details. From the walls and the mural decorations to the reproductions of period furniture in the lounges the Spanish design is followed.

Before going to the Palace for the first time Thursday night it might be well to take a word tour through the new playhouse.

The boxoffice is approached directly from the street. Inside double swinging doors is the lobby. The winding stairway leading up to the mezzanine floor and the balcony is entered from the lobby. After passing through more double doors one enters the foyer and the theater proper.

Four Aisles Lead In

The doors separating the foyer and the lobby are made of heavy walnut and are in keeping with the interior decorations. Deep grooves line their surface, giving them a weather-beaten appearance. Small openings near the top are barred with iron gratings.

Four aisles lead from the foyer to the orchestra seats, two from the ends of the foyer and two between. The foyer floor as well as the aisles is covered with a heavy carpet. To aid patrons in finding their places each end seat is fitted with a light which illuminates the floor. The seats are upholstered in red leather and are made comfortable with thick padding and springs. The backs of the seats are also leather upholstered.

Opportunities for carrying out the Spanish effect in the mezzanine floor are even greater than in the foyer. Here the designer of the theater has let his fancy take full flight. Here and there patches of red brick appear, as through the plaster had fallen from the walls. A niche in the wall is cleverly adapted to hold a drinking fountain.

Emergency Exits

The view from the balcony is even better than from the lower floor. As in the lower floor view of the stage is unobstructed by pillars, the balcony being of cantilever construction removes the necessity of supporting it with posts and pillars which necessarily cut off the view of the unfortunate patron who is forced to sit behind one.

From the balcony one obtains a broad sweeping view of the entire theater. Although there is nothing to hamper visibility from the lower floor one obtains a better prospectus of the theater from the balcony. There is no second balcony in the Palace.

Emergency exits from the theater with the exception of one fire escape on the west side are all built within the walls of the building.

With the exception of the commercial section in front of the building including office rooms on the second floor and business rooms on the ground floor, the structure is strictly fire-proof.

LLOYD PREPARES STORY FOR NEW SOUND FILM

Los Angeles, Aug. 23—Harold Lloyd who has heretofore started production with only a hazy outline of the story, allowing it to build up as he and his gag staff worked on it, will go into production next week with a completely detailed story. This is necessary because of the sound feature. Lloyd's new picture will be laid part-

ly in San Francisco, notably China-story staff includes Rex Neal, Clyde town. Ted Wilde will direct. The Pruckman, Jay Howe and Felix Adler.

Greetings to the New

PALACE!

At last Marion is becoming a city in every way. We wish to congratulate the Palace management and the community for such a magnificent new theatre.

To Palace Patrons—

We pride ourselves upon starting the city's upward movement. It was said, when we opened that such a place could not exist. Then came the Hotel Harding and now the Palace.

Still Ahead—

For proof, we invite you to visit us for "after the show refreshments."

When it comes to making and serving, in a modern way, our own Ice Cream, in soda form, parfait or fancy sundae; making our own candies, far better than the common kind you get some places, and when it comes to sandwiches and salads there is no equal to be had in this vicinity.

ANDREW P. LOUKES
Marion, Ohio.



Greetings!

I DEEMED it a great pleasure and honor to have been selected as the architect for Marion's New Palace Theatre, and I sincerely hope that my efforts as an architect, having conceived and originated the atmospheric theatre, whose popularity through colorful treatment and unusual charming atmosphere seems to have established itself very firmly with the amusement-loving public of America, will equally please the patrons of the Palace Theatre Company in Marion.

John Ebersson

ARCHITECT

Chicago New York Miami Houston

Fire Proof Building Materials for the NEW PALACE THEATER

Came From This Modern Plant.

We take this means and occasion of congratulating the contractors, owners and the citizens of Marion and vicinity upon the erection of this beautiful new theater.

REMEMBER—When You Need Building Materials or Coal—Call

THE MILLARD HUNT CO.

180 N. Prospect St.—Wholesale and Retail. Phone 4284.

IT'S JUST ACROSS THE STREET

From the Finest Theater to the Finest in Automobiles and Service

We Cordially Welcome our new neighbor, The Palace Theater, to Marion.

Marion's Most Complete Garage Offers—

- Willys-Knight and Whippet Sales and Service.
- U. S. L. Battery Service.
- Outstanding Values in Reliable Used Cars.
- Oil, Gas and Crank Case Service.
- Day and Night Auto Washing and Polishing.
- Grant Tires with 12 month guarantee.
- Genuine Willys-Knight and Whippet Parts and Accessories.
- Day and Night Service Department and Storage.
- Wrecking Car and Road Service.

The McDaniel Motor Company

309 W. Center St. Phone 4214.

Opening of Palace Marks High Point in History of Local Theaters, Where Many Stars Have Performed

OPENING of the new Palace theater will mark the high point of Marion's history in the field of public entertainment, a record that has been established in many of its details. For the second time in a period of approximately 30 years, this city will have a theater ranking as one of the largest and most beautiful to be found in communities of this size anywhere in the United States.

The first local playhouse which gained the city that distinction was the Grand Opera House, which occupied the site of the present Grand theater, on South State st. The original Grand, a house of attractive design seating approximately 1,400 persons, was destroyed by fire about 18 years ago. While this house was in operation, Marion occupied a prominent place in theatrical circles and many of the leading performers and attractions of the day appeared here. No company was too large and no stage equipment too elaborate for the old Grand.

The new Palace, which has few if any equals in cities of this size anywhere, is expected to restore Marion to its former station of eminence in the amusement field.

History Records Six.

Inquiry among older citizens of the community reveals that with opening

of the Palace, Marion's history will record the operation of six different theaters established here at successive periods of the city's progress for the staging of drama, musical comedy and other theatrical attractions classed as the "legitimate."

The earliest house of which there is any definite record was the Apollo Hall, located on the third floor of the Bennett building, where Canby Lodge No. 51, Knights of Pythias now has its quarters. The place was also frequently referred to as Bennett Hall. The exact period during which this place provided Marion with its chief amusement center can not be ascertained. It was somewhere around 1870, however, as shortly after that date theatrical productions began to be presented at the City Hall, a brick building located on the lot at Church and Prospect streets now used for parking purposes.

"Wigwam" Is Next. As the need for larger quarters became apparent, a large one-story frame structure generally known as "The Wigwam," located on the opposite corner of Church and Prospect streets, where the First Presbyterian church now stands, was constructed for theater purposes.

Although officially and formally styled the "Music Hall," the more appropriate "Wigwam" was the name usually applied. There Marion residents went for their theatrical entertainment and also for many of their most elaborate dances and balls, until 1880, when the building was dismantled to provide a site for the beautiful stone church erected by the Presbyterian congregation.

When dances were held in the Wigwam, it was necessary for the theater employees not only to remove all of the seats but to level the floor by crawling underneath and erecting portable framework which provided the incline required in the seating arrangement for shows.

After the demise of the Wigwam, there was a period of several years during which Marion had no theater of any description. Realizing that entertainment was necessary for the city's welfare and progress, a group of public-spirited citizens organized finally and decided to erect and equip a suitable playhouse.

Grand Is Built. The result was that about in 1895 the Grand Opera House was built. It was an expensive venture for the investors, none of whom ever realized any profits. The house, it was said, was too large and costly for the city's size at that time.

Prominently identified with the Grand Opera House project were Amos H. King, C. C. Stoltz, T. J. McMurray, Henry Strelitz and Edward Huber. For approximately 20 years the Grand Opera House kept Marion on the theatrical map. Following its destruction by fire, there was again another period in which the city was without a place for stage performances of sizeable proportions.

The city's need was finally supplied about 13 years ago when Marion Lodge of Elks purchased the site of the Grand Opera House and what was left of the building and arranged for reconstruction. The present Elks' home and Grand Theater was the outcome of this purchase.

Throughout all of these years, Marion held the reputation of being a "good show town," that is, a place where high class attractions were almost certain to be well patronized. As a consequence, managers never hesitated to bring the best and largest shows here.

Old-Time Stars. In the days of the old Apollo Hall, there appeared here such performers as Alf Bennett, a famous comedian of a half century ago, Ada Murray and her distinguished husband, George Ober, J. W. Carner, an old-time favorite in "Rip Van Winkle," and Felix and Alice Vincent and their repertoire company who were almost an annual county fair week attraction.

The Wigwam, which was established largely through the enterprise of George B. Christian and C. C. Pettit, was opened by Harry Lacey, starring in "The Still Alarm." Other stars appearing on the Wigwam stage during

the nine or 10 years of operation were Madame Janaschek, Nellie Free, Lillie Evans, Cora Van Tassel, Graham Earle and Minnie Maddern.

Many years later, Minnie Maddern, who in the meantime had added "Fiske" to her name through marriage, appeared at the Grand Opera House, still in the role of a star, even greater than she had been in the days of her youth.

The Grand Opera House was opened with a play starring Madame Rhea, noted French actress. While the old Grand operated, Marion theatergoers saw behind its footlights such notable as Lillian Russell, Della Fox, Henry E. Dixey, Francis Wilson, DeWolfe Hopper, Virginia Harrod, Trixie Friganza, Eva Tangway, Richard Carle, Jefferson DeAngellis, Joe Murphy, Madame Modjeska and Bertha Kalich.

And now, with the doors of another theater about to open, a theater far surpassing any of the past, it is generally predicted that future years will again find the real luminaries of the stage again placing Marion on their calling list.

CITY KNICKS CHAPLIN \$40,000 VS. \$100,000

Los Angeles, Aug. 28.—By the end of this year Charlie Chaplin will have surrendered part of his studio to the city—16-foot frontage on La Brea avenue for the full 400 feet of its length. The thoroughfare is being widened to 100 feet. The work is now under way beginning at Santa Monica boulevard and proceeding north. Chaplin is receiving from the city \$40,000 for his strip of land. But the

city is right around and asks him \$200,000 as an assessment on the improvement.

The betterment involves moving back the row of administration buildings, for which there is plenty of room. When the buildings were erected 10 years ago, the architect allowed 28 feet

behind the administrative structures against the possibility of street widening. The laboratory, however, will be 30 feet, necessitating the cutting in two of the building.

If a man keeps cool he commands himself and others.

BILL TILDEN ASKS \$3,500 AS VAUDEVILLE TURN

Bill Tilden, American tennis star, just returned from Paris, may become a vaudeville regular if George Godfrey can adjust his salary demands of \$3,500

weekly with the managers.

Tilden will break in on an act Sept. 2 week.

Godfrey, now associated with Edw. S. Keller, also has "Red" Grange in tow. The tow-head will start Aug. 27, with future undetermined.

Ornamental Iron and Bronze Work

Was our contribution to the beautiful Palace Theater.

We sincerely extend our congratulations to the owners on the completion and opening of this modern playhouse.

Ornamental Iron and Bronze

IRON STAIRS
ELEVATOR ENCLOSURES
FIRE ESCAPES

IRON CANOPIES
WIRE WORK
CAST IRON FRONTS

Estimates Furnished Promptly.

C. W. Olson Manufacturing Co.

1310 Quincy St., N. E.

Minneapolis, Minn.

THURSDAY

August 30
6:30 P. M.

V. U. YOUNG

Dedicates His Half Million Dollar Theatre

To the People of Marion.

PALACE

Central Ohio's Only Atmospheric Theatre.

"Truly A Wonderland Erected For Your Amusement!"

Congratulations

We wish to join in congratulating Mr. V. U. Young and his associates upon the completion of the beautiful

New Palace Theatre

This large investment is another undeniable tribute to the soundness of the progressive community in which we live.

THE CITIZENS BUILDING & LOAN COMPANY

Corner of Center and Prospect Sts.

W. H. Holverstott, Pres.

L. T. Young, Sec'y.

"SAFETY WITH SERVICE"

Art Marble, Tile and Terrazzo

by

The Ardit Mosaic Tile & Marble Co.

Columbus, Ohio

V. U. YOUNG'S

PALACE THEATRE

"Marion's Only Atmospheric Theatre"

Grand Opening

THURSDAY, AUGUST 30th, AT 6:30 P. M.
AND AGAIN AT 9:15 P. M.

With Same Bill Playing

FRIDAY AND SATURDAY

—Stage—

V. U. Young Presents
3 Big Keith-Albee Vaudeville Acts
The World's Supreme Mentalist
Harry Kahne
in
New and Greater Mental Achievements

Tilyou and Rogers
in
"The Younger Generation"
A Wise Crack and a Dance
That Clever
Johnny Mack and Company
With Ethel Denton, Dolly Moran and Shirley Manion
Splendid Dance Variety Extravaganza

Elmer Newstorm
Conducting
The Palace Concert Orchestra
Playing
"A Night in a Clock Store"

The Palace Theatre

SCHEDULE OF PERFORMANCES
Saturday, Sunday and Holidays
Continuous performances from 12:30 to 10:30 P. M.
Monday, Tuesday and Wednesday
Matinee—Continuous from 12:30 to 3:30 P. M.
Evening—Continuous from 6:30 to 9:30 P. M.
Thursday and Friday
Matinee—Continuous from 12:30 to 3:30 P. M.
Evening—Continuous from 6:30 to 10:30 P. M.

PRICE OF ADMISSION

Matinee
Adults 25 cents
Children 10 cents
Evening
Adults 50 cents
Children 25 cents
Evening prices effective Sunday and Holidays.
No Children in Arms Admitted to Evening Performances.
Every Child Must Have a Ticket.

EXCESS BAGGAGE

—Added—
Beautiful Art Color Film

Metro-Goldwyn-Mayer News

Selected Comedy



The Palace Theatre Policy

The Palace Theatre operates under the policy of presenting the finest and latest of stage and screen entertainment, with the proper musical background at a minimum price of admission.

The affiliation of the Palace Theatre with the Keith-Albee Vaudeville Circuit insures the best stage programs available.

Only Super Presentations of the leading picture producers will be presented at the Palace.

Courtesy, politeness and the comfort of our patrons are paramount in the minds of the trained employees of the Palace, making you the welcome guest who owns the theater.

The Palace Theatre represents a half million dollars invested for your amusement. ENJOY IT!

Banks Kennedy

at the Console

Of the Golden Voiced Marvel Page Organ

Playing

"Everybody's Welcome to The Palace"

—Screen—

WILLIAM HAINES

SEE—
—Haines do the thrilling Slide for Life!
—the making of a screen star!
—life, love, laughter, back-stage!
—the stage smash in films!

Based on the play by John Meehan. Concluded by Frances Marion. Screened by James Cruze.

Mushy Love Scenes Are "Poison," Says Hard Boiled Screen Star

Wolheim's Ideas of Tender Passions Are Unsentimental as His Pictures

Hollywood Calif., Aug. —Louis Wolheim's ideas on the tender passion are as vigorously unsentimental as might be expected, if the man whom the stage knew as the inarticulate stoker of "The Hairy Ape," the torrentially profane Capt. Flag of "What Price Glory" and the screen has known as the brutal, egotistical Searcy of "The Racket."

Wolheim, as I see him in life, is a personality composite of all these fictional prototypes. He has, in addition, to these qualities, a direct, incisive intelligence—incisive that is, except on a few subjects where he has a tendency to be opinionated. But he's a little touchy about love scenes.

I made this discovery from the vantage point of a comfortable chair—a beamed English ceiling above me—

OWNERS HAVE FAITH IN MARION'S FUTURE

City Also in Direct Line for Extension of Company's Theater Chain

A faith in the future development and growth of Marion and the entire district lying between Chicago and Cleveland was instrumental in the choice of Marion as the site of the new half million dollar Palace theater.

Not only this confidence in Marion and Ohio, but also the fact that Marion is in a direct line to complete and extend the chain of theaters now owned by the Young Amusement Company, entered into consideration when selecting the present location.

V. U. Young, general manager of the company, and C. J. Wolf, president, told reporters of this paper that their faith in the industries, the growth, and future development of Marion was unbounded. It was this faith and the desire to give the people of Marion the latest and highest type of entertainment, presented in a theater that would excel any other theaters in this district, that was the incentive for their quick action in locating here.

At the time a local real estate representative called to point out the advantages of building in Marion, other picture companies were considering sites here. Quick action and keen business judgment on the part of Mr. Young and his associates made it possible for them to first locate here. The other companies, knowing that Marion at the present time could not support more than the one large theater withdrew.

According to industrial report of the plants located in Marion, working conditions are making rapid strides toward the peak, and it is the contention of Mr. Young and his associates that conditions will continue toward the best.

Marion, has in a measure, been responsible for the erection of the theater for it is the owners' faith in the people and their appreciation of good entertainment, that led to the building of the Palace theater, a half million dollars erected for the enjoyment of the people.

THREE SWITCHBOARDS CONTROL ALL LIGHTS

Four Huge "Spots" Flash Thousands of Candlepower Onto Stage

Three separate switchboards, one a master supplying current to the other two, will control all the lighting effects of the Palace theater.

Perhaps the most complicated of all these and upon which the success of the stage and auditorium lighting effects depends is located to the left of the stage.

It is here that the three-color foot-lights and borders are controlled. At the slightest touch the electrician can vary the brightness of the lights.

Foot and border lights are composed of three separate banks of red, blue and white bulbs. Each section of these can be brightened or dimmed separately or together.

Four huge "spots," each consisting of three units, are permanent fixtures in front of the balcony and projection room. These flash thousands of candlepower of light onto the stage.

No open or white lights are used on the interior of the auditorium, all are enclosed in colored shades harmonizing with the wall decorations.

A switchroom is located just off the lobby controlling lights in front sections and outside the building. The flasher for the Palace sign is located in this room.

well-filled book shelves to my back and Wolheim before me weighing down a divan—Wolheim with shirt open at neck and two blunt fingers choking a cigarette.

"Have you ever played in a love scene?" I asked innocently.

"What do you mean—don't you think I could?"

"We waited for more—I say 'We' for those present included Lewis Milestone, Hollywood iconoclast and William Cameron Menzies, a young Scotch director of United Artists.

"Sure, I played in a love scene," exclaimed Wolheim suddenly. "On the stage in 'The Fair Circassian.' I played the prince regent, afterwards George IV. I was supposed to use a lot of technique making love to a woman—the play lasted a week.

"I come pretty close to a love scene in the new Vilma Banky picture," he continued after the laugh subsided.

"You can see I adore her. This business of a cluck at the end of a picture is all wrong dramatically. The dramatic part is the man wanting the woman—not getting her. That's anti-climax."

He paused to consume a third of a cigarette at one draw.

"You never see any of the mushy love scenes on the stage," he began again. "They're poison—they're lurid. These things are not meant to be done in public. When they are, they're funny. Look at the love letters published in the newspapers. Everybody laughs. You see, the readers are not in the mood of the person who wrote them or of the person the letters were written to. It is the same if you walk in anywhere and see two people embracing. They look silly."

"What is a great lover?" he demanded aggressively.

"When I see a great lover on the screen I don't believe him. He isn't sincere. It isn't done that way. I never in my life heard of a woman who actually bent back over a guy's arm when he kissed her. It's all wrong."

"You never see any of the mushy love scenes on the stage," he began again. "They're poison—they're lurid. These things are not meant to be done in public. When they are, they're funny. Look at the love letters published in the newspapers. Everybody laughs. You see, the readers are not in the mood of the person who wrote them or of the person the letters were written to. It is the same if you walk in anywhere and see two people embracing. They look silly."

"What is a great lover?" he demanded aggressively.

"When I see a great lover on the screen I don't believe him. He isn't sincere. It isn't done that way. I never in my life heard of a woman who actually bent back over a guy's arm when he kissed her. It's all wrong."

"You never see any of the mushy love scenes on the stage," he began again. "They're poison—they're lurid. These things are not meant to be done in public. When they are, they're funny. Look at the love letters published in the newspapers. Everybody laughs. You see, the readers are not in the mood of the person who wrote them or of the person the letters were written to. It is the same if you walk in anywhere and see two people embracing. They look silly."

"What is a great lover?" he demanded aggressively.

"When I see a great lover on the screen I don't believe him. He isn't sincere. It isn't done that way. I never in my life heard of a woman who actually bent back over a guy's arm when he kissed her. It's all wrong."

"You never see any of the mushy love scenes on the stage," he began again. "They're poison—they're lurid. These things are not meant to be done in public. When they are, they're funny. Look at the love letters published in the newspapers. Everybody laughs. You see, the readers are not in the mood of the person who wrote them or of the person the letters were written to. It is the same if you walk in anywhere and see two people embracing. They look silly."

"What is a great lover?" he demanded aggressively.

"When I see a great lover on the screen I don't believe him. He isn't sincere. It isn't done that way. I never in my life heard of a woman who actually bent back over a guy's arm when he kissed her. It's all wrong."

"You never see any of the mushy love scenes on the stage," he began again. "They're poison—they're lurid. These things are not meant to be done in public. When they are, they're funny. Look at the love letters published in the newspapers. Everybody laughs. You see, the readers are not in the mood of the person who wrote them or of the person the letters were written to. It is the same if you walk in anywhere and see two people embracing. They look silly."

"What is a great lover?" he demanded aggressively.

"When I see a great lover on the screen I don't believe him. He isn't sincere. It isn't done that way. I never in my life heard of a woman who actually bent back over a guy's arm when he kissed her. It's all wrong."

Six Firms Connected With Construction of Theater

Six concerns were interested in the construction of the new Palace theater, separate contracts being awarded for installation of the heating, lighting, ventilating, electric systems, and other work.

D. W. McGrath & Sons, general contractors, of Columbus, were awarded the general contract for the building early last fall. They started operations about Jan. 1. The excavating for the basement, however, had been under way since late fall.

N. J. Altman, as superintendent of construction for the contractors, saw the building grow brick by brick and girder by girder. Associated with Altman in the supervision of the construction was E. R. Evans, superintendent.

FOUR LLOYD COMEDIES DONE IN RUSSIAN

Los Angeles, Aug. 28.—Harold Lloyd has broken down the Russian barriers against American films. Under an arrangement with Sovkino four Lloyd comedies will be admitted to that country immediately. These are "Dr. Jack," "Safety Last," "Grandma's Boy" and "Sailor Made Man." Admission of "Speedy" is under discussion. If arrangements are completed and the picture is exhibited before Jan. 1, it will mean this Lloyd comedy has been shown around the world within a year, something of a record.

EXTRALESS PICTURES

Los Angeles, Aug. 28.—Paramount will produce "Interference" without a single extra. Each person called before the camera possesses a part. The cast is a long one. So far as known this is the first instance of its kind in the 16 years the studio has been operating.

equipment was installed by the Columbus Heating & Ventilating Co. T. M. Cunningham, of Marion, installed the steam piping and plumbing. Electrical apparatus was installed by the Electric Power Equipment Co., of Columbus. The Michael Angelo Co., of Chicago, had charge of the interior decorating and painting.

Announcing the Opening of

The Palace Art and Gift Shoppe

in the new Palace Theatre Building

by

Etta Mae Miller

and

Mildred Walker

WE join Marionites in congratulating the "Architect and Owners" of this magnificent new theatre and we particularly call your attention to the

INTERIOR DECORATING

WHICH WAS DONE BY

MICHAEL ANGELO STUDIO

212 E. Superior St. Chicago, Ill.

Announcing

the removal of offices to the Palace Theatre building.

September 1st, 1928

Dr. E. O. Richardson
Dr. A. J. Willey
Dr. E. W. Imbody
Dr. Fillmore Young

Heartiest Congratulations

—to—

Mr. C. J. Wolf, Mr. V. U. Young and Associates

On the Occasion of the Opening of the Beautiful New

PALACE THEATRE

in Marion, Ohio

Page Organ Company

Builders of High Grade Church and Theater Organs

LIMA, OHIO

Say Hotel's Size and Beauty Impressed Men to Build Theater

W. E. BAIL DOES PUBLICITY WORK

Assistant Manager of Palace Has Been with Young Theaters Four Years

Young Amusement Co. theaters for the last four years. Until recently he was located in Canton, where he was publicity director of three of the Young theaters and manager of the Lyceum, one of the chain.

Mr. Bail received his first training in theater work with the Balaban & Katz Theater Co. of Chicago, a company affiliated with the Public Theater chain.

He is a high school graduate and former student in Wabash college, Crawfordsville, Ind.

Prior to entering theater publicity work Mr. Bail served as a reporter on the staff of the Post-Tribune at Gary, Ind., and was also editor of school and college newspapers.

THREE MARION MEN HAVE AIDED PROJECT

J. W. Thew, R. T. Lewis and David W. Evans Worked on Plan

BENEFITS ARE SEEN

Various Circumstances Combine To Make Enterprise Reality

Business projects like the one involving the Palace theater are not the result of chance nor are they launched or consummated on a day's notice.

Various circumstances combined to make this important enterprise a reality for the city of Marion. The account of how it all came about, if related in detail, would make exceptionally interesting reading.

Three Marion men were directly instrumental in having the Palace theater built here. Others who did not figure actively in the transaction nevertheless are entitled to a share of the credit.

The three who assisted in the negotiations which resulted in selection of the site and building of the theater are J. W. Thew and R. T. Lewis, local realtors, and David W. Evans, of the John Evans Lime & Stone Co. and the John Evans Land & Realty Co.

Hotel Impresses Them.

Citizens connected with the building and management of Hotel Harding are the others designated as being indirectly instrumental in having the theater located here.

It was while stopping at the hotel on the occasion of their first visit here that representatives of the Young Amusement Co. formed an exceptionally favorable opinion of the city, according to statements of those familiar with the story.

"Any town that can support a hotel of this kind is entitled to a first class theater," one of the visitors is said to have declared. Mr. Lewis gives the hotel builders and management a large part of the credit for bringing the theater to Marion.

Interested in Marion.

It was about a year ago that several large theater corporations became interested in Marion as the prospective location for a new show-house of large city proportions.

J. W. Thew appears to have been among the first local business men taking a hand in the movement. At his bidding, agents of the Young Amusement Co. came here to inspect a site offered by Mr. Thew. Not satisfied with the location shown by him, they remained for a few days to make a survey.

While stopping at Hotel Harding their attention was attracted to the vacant lot on the opposite side of Center st., on which R. T. Lewis held an option. Mr. Lewis was called into conference and the negotiations started which eventually ended in purchase of the lot from George D. Copeland.

Benefit is Seen.

It is now generally known that Mr. Lewis, in agreeing to having the ground converted into a theater site, sacrificed a commission of considerable proportions that had been assured him from sale or lease of the property to an oil company. Arrangements had practically been completed for installing a filling station there.

Mr. Lewis dropped negotiations with the oil company, realizing that a theater would contribute vastly more than a filling station to Marion's welfare and West Center st. development.

Copeland's Representative.

It was in negotiating for purchase of the site that Mr. Evans made his first contribution to the enterprise. He acted as representative for Mr. Copeland and rendered valuable service in

Seven-Piece Orchestra in Palace Theater Pit



E. A. NEWSTROM

working out the transaction.

Following signing of the deed, both Mr. Lewis and Mr. Evans remained active in working out the final details preparatory to the building. This and other service throughout the negotiations they performed without compensation, excepting that which will come from increase in the value of West Center st. property resulting from erection of the theater.

PROJECTION BOOTH LARGE, WELL LIGHTED

Two Machines, One Stereopticon and Spotlight for Programs

To most followers of the jumping celluloid, the place where the projection machines are located is known as a "booth." In many theaters this is correct for there is but little room, in which to move around.

This is not the case at the Palace theater where the projection equipment is housed in a real room. This part of Marion's new playhouse is exceptionally large, lighted by three large windows facing Center st.

In one corner of the room the generating machinery is located in an inclosed space. It is here that electricity from the power lines is converted into direct current for the arc lights of the projectors. Even control of this "juice" is obtained through a rheostat. Two projection machines will be found in this room. These are the latest in design and will provide the "movie" end of the show. A large stereopticon and a spotlight complete the projection equipment.

SAFETY DEVICES ON PALACE EQUIPMENT

Building Itself is of Fireproof Construction; Hose Through-out Structure

Where there is the least possibility of a fire breaking out, every precaution has been taken to insure the safety of all patrons of the Palace theater.

In addition to many exits and fire escapes, automatic devices on fire doors in the furnace room, stage and projection booth cut those sections of the building off from the remainder with no danger of the flames spreading.

Constructed of concrete, steel and brick, the building is itself fireproof. Very little wood—only for certain decorations is used.

In the projection room a series of doors covering the holes in the booth are connected with bits of fusible metal. A section of this metal is located over each projection machine and whenever heat rises to a temperature above nor-

Stage is Large Enough to Care for Big Productions

MEASURING 20 by 55 feet, the stage of the Palace theater will be large enough to accommodate the biggest attractions that will be brought to Marion. Equipment installed will be adequate for all future needs, according to theater officials.

Twenty-five sets of boxes are a part of the "Peter Clark" with a counterweight system of handling the scenery. It is here that the drops are located. Special sets

used the doors are automatically released. In this manner the rooms are cut off from the rest of the building allowing no fumes or smoke to escape. Doors on the furnace are counter-balanced, being held in place by a wire linked by a fuse. The fireproof curtain will automatically drop in case flames break out on the stage.

Fire hose is located at strategic points inside the building to combat any fires that may break out.

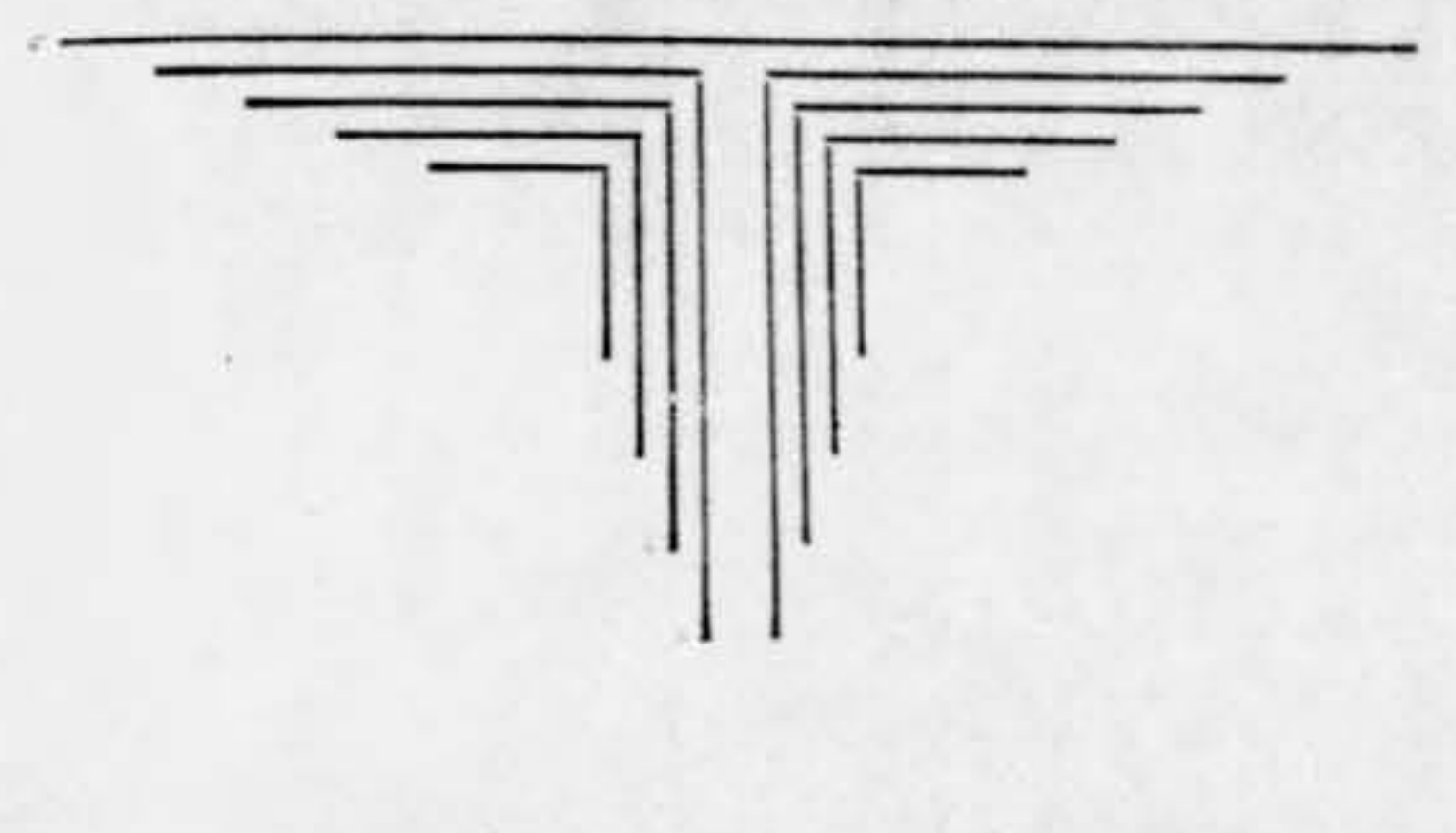
have also been installed. Dressing rooms are located above and to the right of the stage as well as in the basement. Eight rooms for 24 persons have been constructed in the upper rooms while facilities for choruses and the orchestra are a part of the basement.

The front section of the stage is floored with hardwood while the remaining parts are covered with soft wood.

DESERT SONG OPERETTA WITH MUSIC AND DIALOG

Los Angeles, Aug. 28.—Warner Bros. have finally decided to Vitaphone "The Desert Song," to be a special and the first operetta to be synchronized with dialog and music. Shooting starts in 30 days. An independent cast is to be selected with leads having good singing voices.

A Perfect Musical Background For Every Palace Production



Absolute enjoyment of the screen classics can only be realized when presented with the proper musical background.

Palace productions are symbolic of culture, refinement and beauty—beauty of both color and sound. Through the medium of the Palace Orchestra and the Golden Voiced Marvel Page Organ, you will reach greater heights of enchantment and rapture.

The Palace will bring to you two masters of the universal language—music.

Banks Kennedy, radio star, song writer and organist at the console of the Marvel Page Organ will lead you to a new appreciation of music. Mr. Kennedy has for many years been featured organist of the largest theatres throughout the country.

Professor Elmer Newstrom, director of the Palace Orchestra, student of the celebrated Harry Dimond, is a recognized leader and director of orchestras. He has been associated with leading theatres of the Chicago district.

Our presentation will be a revelation to you.

PALACE THEATRE
Cor. Center and Campbell Sts.
FORMAL OPENING
THURSDAY, AUG. 30, 6:30 P. M.

Columbus System
OF
HEATING & VENTILATING
IN
Palace Theatre
BY
THE
Columbus Heating & Ventilating COMPANY
Columbus, Ohio.

We Congratulate the New

PALACE THEATRE

AND

ANNOUNCE

That we are privileged to have a new Branch Office in this Beautiful Theater Building

OPENING ABOUT SEPTEMBER 1st

The Faultless

CLEANERS and DYERS

132 E. Church St. Phones 2526-2555-2951.

We Welcome the New Palace Theatre



After the Show Remember Your

Cooling and Refreshing

DRINKS—LIKE YOU WANT THEM

AT
THE REXALL DRUG STORES

HOTEL HARDING BLDG.

OPPOSITE THE NEW PALACE.

145 E. CENTER ST.

Most of Theater Store and Office Rooms Are Already Rented for Business Use

Large Section of Second Floor To Be Occupied by Doctors; One Suite Rented for Beauty Parlor; Inquiries Indicate All Available Rooms Will Soon Be Taken

Only one apartment on the second floor and three rooms on the first floor of the new Palace theater building have not been rented, and a number of inquiries have been made about those, R. T. Lewis, realtor, said today.

Four Marion physicians will occupy suites of offices on the second floor, while a beauty parlor will be operated in the remaining suite.

Doctors Rent Rooms
Dr. Fillmore Young will have four front rooms at the west end of the building, Dr. E. W. Imbody, dentist, will occupy the six rooms adjoining Dr. Young's offices, and Dr. A. J. Willey will have four rooms adjoining the Imbody suite. Dr. E. O. Richardson will occupy two rooms in the north end of the building, facing Campbell st.

The beauty parlor, to be operated by L. C. Stuckert, manager of the beauty parlor at Harding Hotel, will occupy rooms in the southeast corner of the second floor facing both Center and

Campbell sts. Mr. Stuckert has announced that he will operate five booths. He will also continue his business at the Harding Hotel.

One Not Taken
The one apartment, consisting of two rooms and a bath, which has not yet been rented, is located on the west side of the building in the rear.

Two of the five first floor rooms have been rented. The Faultless Dry Cleaners will establish an office in one of the rooms and Mrs. J. Arthur Miller and Mrs. R. C. Walker, Chestnut st., will open an art and gift shop in the other. There have been a number of inquiries concerning the rental of the other three rooms and they are expected to be rented by Thursday, when the theater opens.

All the new business places will open as soon as equipment is installed and everything is in readiness for occupation.

ARBUCKLE'S VERSION
Los Angeles, Aug. 28.—Roscoe Arbuckle was asked to give his definition

Manager Sindlinger Has 15 Years of Theater Training

Executive Head of Palace Started in Business When 13 Years Old



ALBERT SINDLINGER

ALL around experience in theatrical work for 15 years has equipped Albert Sindlinger for the position of manager of the Palace theater.

Mr. Sindlinger arrived here last week to complete arrangements for the opening of the theater Thursday night. His home is in Athens.

He started in the theatrical game as a project machine operator in New Philadelphia, O., at the age of 13 and while a high school student became an exhibitor in a small way. Later he attended Ohio university.

Since then he has served in practically every capacity in a theater. In addition to taking a part in a show appearing on the chautauqua platform, he has served as manager, electrician, cameraman and stage hand.

of gin and replied: "That's something the old-time film actors were buying when Ruth Roland was buying real estate."

SIGN IS VISIBLE MORE THAN MILE

Visible for more than a mile, the 40-foot electric Palace theater sign will be one of the largest and most beautiful in Marion.

Each one of the six letters is over four feet in height while the sign extends 60 feet above the street level. The letters are surrounded by a flash border.

The marquee will hold the attraction boards on its three sides. The boards will be brilliantly lighted and carry four banks of letters.

OWNER OF THEATER TO USE AIRPLANE

Young Now Owns Craft and Hopes To Make Many Flights Here

Because the interests of the Young Amusement Co., builders of the new half million dollar Palace theater, to be opened to the public of Marion Thursday, night are so far flung, V. U. Young, general manager of the concern, uses an airplane to keep in contact with his different houses.

Mr. Young is on the aviation board of Gary, Ind., where the home offices of the company are located, and has given his support in an effort to promote the large air field in Gary and has such firm belief in the advisability of air travel that he has purchased his own plane.

The plane that is owned by Mr. Young is a product of the Velle Airplane Manufacturers of Moline, Ill. The plane is a two passenger monocoque cabin cruiser and is capable of attaining a speed of 150 miles an hour.

Mr. Young first became interested in aviation when Colonel Lindbergh crossed the ocean. Since then he has put his interest into action and through his confidence has done much to enlist the support of other business men in the new field of travel.

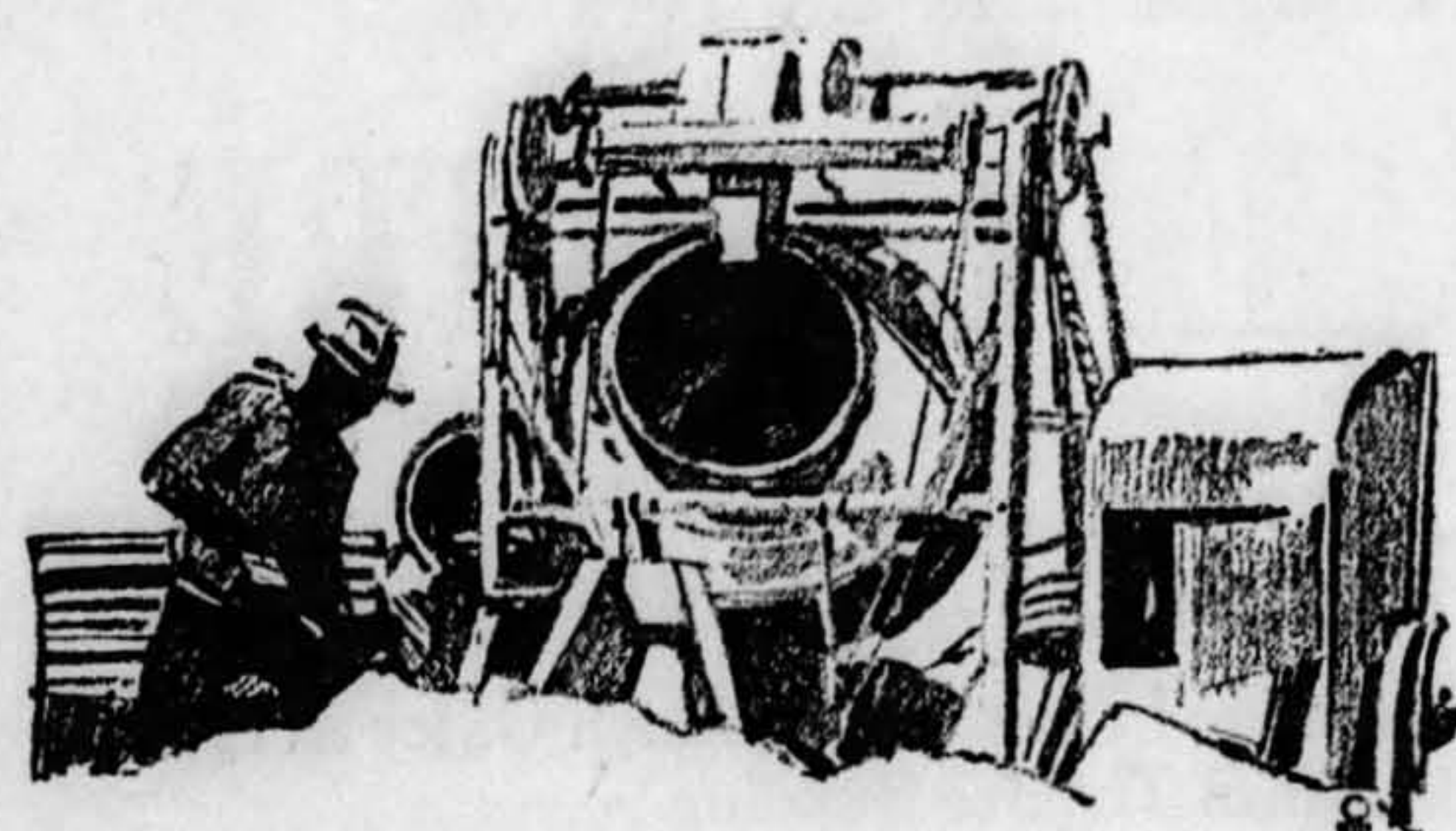
Mr. Young has flown to Marion on only one occasion, as Marion has not had a favorable landing field. On his first and only trip he was forced to land in a small field. The danger of such landings are not advisable because of the great risk.

In the future it is the hope of Mr. Young that he will be able to make all his trips by planes. On his flights he carries his brother as pilot.

TEN TELEPHONES USED IN THEATER'S SYSTEM

Ten telephones make up the inter-communication system of the Palace theater. These are located at points where those in charge of the program can be reached at anytime providing complete control of theater activities.

Menjou's "Private Life."
Los Angeles, Aug. 28.—Adolphe Menjou's first Paramount under his new contract, will be "His Private Life," an original by Ernest Vajda. Frank Tuttle will direct.



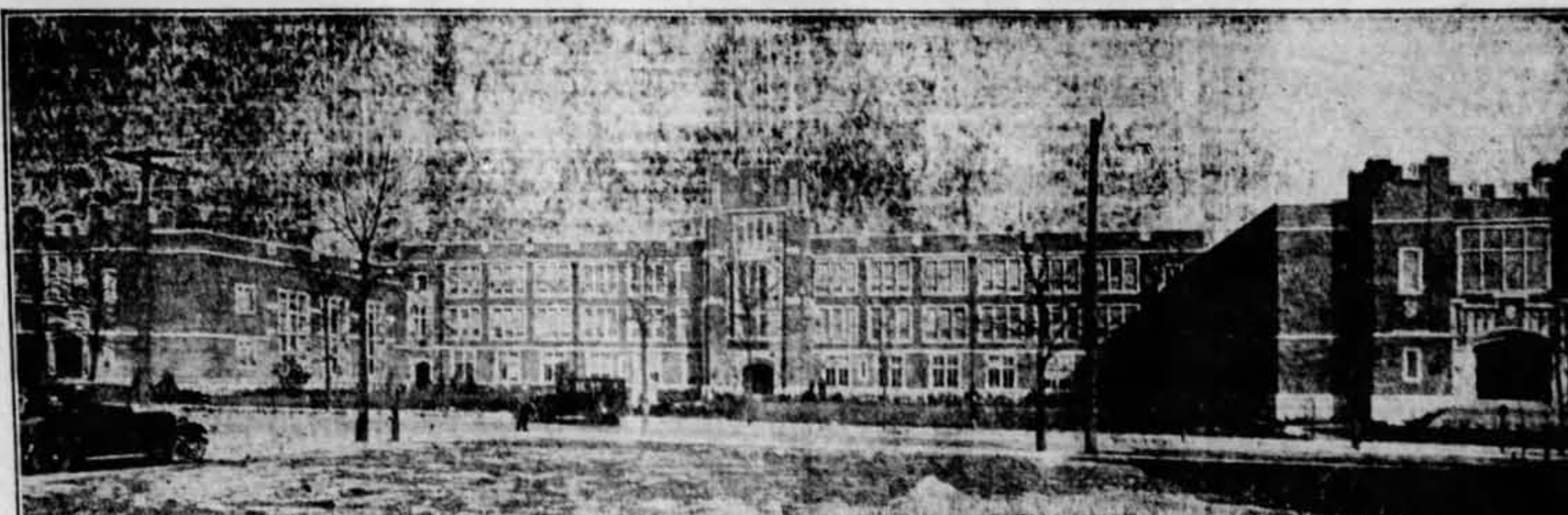
Structures Built to Endure Are Built with Honor

HONOR is the secret ingredient that enters into every part of a building or paving operation carried on by us. It controls not only in the selection of quality materials, but in the application of skilled workmanship at every step, the hidden as well as the visible, and in the figuring of costs.

Excavating and Foundation for the New Palace Theatre are our part in its erection.

P. DRAKE & SONS

Paving, Bridge and Sewer Contractors. Marion, Ohio.



The face brick in the above High School at Trenton, N. J., and all the bricks in the main walls of the new Palace Theater at Marion, O., are

WYANDOTS

Furnished By

The Wyandot Clay Products Co.

Upper Sandusky, Ohio.

T. M. CUNNINGHAM

Plumbing and Heating Contractor

in the new

Palace Theatre

Crane Plumbing Fixtures

were used throughout

Vapor Heating Installed

is the

Illinois Engineering System

We are equipped to take care of other plumbing and heating contracts of any size.

159 McWilliams Ct.

Marion, Ohio.

Phone 2818.

HOW NEW THEATER PROGRESSED THROUGH THE MONTHS



Above are views of the new Palace theater, from the day the sign announcing the house was erected up to June 8. Upper row, left to right, shows: the original site, first excavation work and first foundation work on March 1. Lower row, left to right, shows: the appearance of the site on April 2, the building one month later, May 1, and the structure as it took its final form on June 8.

have a solid faith in the future of the sound and talking pictures and this, along with the desire to give Marion the latest and best entertainment possible, has been responsible for the expensive installation of the sound equipment.

FAN MAIL BECOMES PROBLEM TO STARS

Increases by Leaps and Bounds; Nearly All Ask Replies

Los Angeles, Aug. 28.—Fan mail addressed to screen favorites in Hollywood is increasing in such rapid bounds that the producers as well as free lance players are facing a problem to answer each with a letter of appreciation and the customary photograph expected by every one sending a letter.

Taking as a basis of one leading picture star's claim to have received three boxes of mail containing 250,000 fan letters from all parts of the world within one year, it is conservatively estimated that more than 32,250,000 fan letters are cleared through the Hollywood post office annually. Cost of sending these letters at two cents each would total \$645,000. Cost of replying with a photograph, based on volume, is around 6 cents each or a total of \$1,935,000, automatically charged by the producer or players to maintenance of good will with the public.

Since much is to be derived from the bonafide fan letter, an analysis discloses that only 25 per cent of all the letters received are of any outstanding value in determining a potential popularity for the star or player. Bulk of the letters come from children with no other object in mind but to make a collection of photographs. Comparatively few are sincere in their admiration, yet it is impossible to separate the chaff from the wheat.

Fan mail departments keeping a close tab on the letters invariably find a group of letters coming from the same person addressed to the studio's entire roster of contract players. Some betray the motive by writing at random, soliciting photos from executives claiming that they admired their work in such and such a picture. They pick the slightest thread to address a name, seen in some fan magazine, to increase the collection of mugs.

Owing to the cost of servicing fan letters, many of the free lance players appropriate all they can afford to answering the many letters received. All that come within the budget are taken care of and the balance is ignored. It does not appear to make a noticeable difference in the player's popularity, as the mail increases instead of decreases.

Racketeers

The studio operating their own fan mail departments place no limit and answer each letter in the order they are received, yet they in no way encourage any method that will increase the flow of letters, which is contrary to certain promoters now operating in Hollywood who will broadcast propaganda for stimulating fan interest to join their various snacker games, commonly known as Fan Clubs.

RUSHING FOR SALLY

Los Angeles, Aug. 28.—In order that Sally O'Neill may get away by Dec. 1 for a European trip, Tiffany-Stahl is rushing story preparations on two more pictures. These are "Applause," a theatrical story, and "The Big Top," circus yarn.

There's nothing like leather—with the exception of Welch rabbit.

Ventilating System Will Supply 52,000 Cubic Feet of Fresh Air Each Minute

Three Large Suction Fans and Like Number of Hot Air Furnaces Comprise Equipment; Each Person in Filled House Given 35 Feet of Air Per Minute

Assuring coolness in the summer as well as well-regulated warmth in the winter, the ventilating and heating system of Marion's new Palace system will supply 52,000 cubic feet of air each minute.

Three large suction fans and a like number of hot air furnaces comprise the equipment for the theater proper while a steam heating plant is utilized for the stage, offices and business rooms.

One large fan, with a capacity of 14,000 cubic feet of air per minute, supplies most of the ventilation for the theater. It is located in the basement of the building and draws its supply of air from a huge shaft running above the top of the roof.

This air is sucked into the building and in the winter time passes over the fire box of the furnaces. In the summer it is run to keep the theater cool.

Two additional fans located on top of the theater roof are used in the summer time to boost the supply of cool air passing through the building. Two outlets are provided on each side of the structure for exhaust air.

The ventilating equipment is designed to provide a circulation of 40,000 cubic feet of air each minute through the lower floor of the auditorium.

Through the balcony, 12,000 cubic feet of air is passed every minute.

With the theater filled to capacity, each person is given 35 cubic feet of air a minute. This is well above the requirements necessary for physical comfort.

THREE-MANUAL ORGAN AT PALACE BEAUTY

Instrument Is Designed Especially for New Marion Theater

Reflecting every color of the rainbow as brilliant hues "spots" play over its surface, the three-manual Page organ of the Palace theater is a thing of beauty in appearance as well as tone lending in no small way to the artistic effect of the interior.

Organs of exquisite tone and ornate appearance have become one of the outstanding features of motion picture houses and the management of Marion's new playhouse invested a

Sound Pictures Promised Marion by New Theater

SOUND pictures, the latest development in the furtherment of the motion picture industry, which includes the talking pictures, the synchronization of music to the action of the film, the Movietone, a talking newreel, and Vitaphone, will be installed in the Palace theater as soon as the various companies making this equipment are in a position to supply the house.

V. U. Young, general manager of the Young Amusement Company said last night.

It had been the desire of the management of the theater to have this new feature in readiness for the opening of the new Marion

Palace Thursday night, but because of the heavy demands on the equipment companies, this will not be possible. The companies will not be in a position to equip the Palace until early spring, according to their present reports.

Representatives have made all necessary arrangements for the installation, and as soon as the equipment is ready it will be installed. The Palace was designed and constructed with the idea of installing the sound devices. This special designing and construction will permit the perfect reproduction of the sound pictures.

Mr. Young and his associates

We Congratulate
the Builders and Owners of the Palace Theatre on the completion of a high class job.

Marion Sand
Used Exclusively

The Marion Sand and Gravel Co.

WE ARE GRATEFUL FOR HAVING THE OPPORTUNITY OF PLACING THE INSURANCE ON THE NEW PALACE THEATER



We write all types of insurance in old-line companies at lowest rates. Fire, health and accident, tornado, burglary, automobile, and others. Phone 7231.

Free from the Overshadowing Fear of Death or Disaster Is the Man Who Lives

PROTECTED BY INSURANCE

The sense of peace, security, and freedom from worry that follows the taking out of insurance, is a boon which those who have followed this wise course can best appreciate.

It is a duty you owe not only to your loved ones, but to your self, to provide against every contingency and build up an assured estate for the future. Send for one of our representatives.

Harry O. Dicks
INSURANCE OF ALL KINDS
No. 7 Cummins Bldg. Dial 7231.

CALIFORNIANS SEND DOGS TO LAUNDRY

Canine Beauty Parlor Some Days Has as Many as 400 Pets

Los Angeles, Aug. —Now a dirty dog, like soiled shirts and sheets, goes to the laundry. The laundry is in East Washington st., its proprietor is Alexander Moxley and on some days as many as 400 dogs may be found there for plain-washing or one with beauty trimmings, including even a marcel.

And any day scores of pouches are sent for laundering.

The laundry reveals in high relief that dogs in general are regarded as items of household upkeep with the average citizen who has taken out a license to possess one.

Instead, most of the dogs sent to the laundry are owned by men or women whose income averages \$200 a month. And it is such, instead of the \$2,000 week movie actor or actress, who lavishes care and affection upon the canine.

Arriving at the laundry Fido is lugged into the receiving room, his number and owner's name booked.

Then, dirty doggie is told to hop into his individual vat of warm water. Being a dog, as a rule he doesn't object, in fact, seems to enjoy the rubbing and scrubbing.

Following the tubbing, Fido is given a soothing thorough shower bath, and then is taken into the drying room, where first he is electrically dried and then more gradually, in a warm section of this department of the laundry.

As the third stage of drying, he is taken outside and, within his individual wire compartment, the drying is completed in the sunlight.

After the third stage of the drying, Fido is massaged with a preparation to keep him more free of fleas, which, reveals Moxley, do not have their origin within a dog's coat but, instead find their way there from the ground.

Moxley's laundry also is equipped with a beauty parlor wherein bow-wow may receive all the cosmetic attention accorded his mistress—or master.

Among such attendance are permanent waves and face-massages.

There is a minimum standard price for a complete beauty treatment, which includes the teeth and polishing the nails. For laundering the dog and polishing his coat there is also a set standard. And for a third set price, covering service for a month, you may have your yet laundried, manicured and brushed once a week.

But a plain laundrying costs only a dollar.

So popular is the dog laundry idea, seemingly, that it has called for the opening of a branch in Hollywood, where are taken care of the dogs of the film folk.

Announcing the Opening
of
A New Beauty Parlor
by
STUCKERTS
on the second floor of the
New Palace Theatre Building
between the first and
fifth of September

We will continue to operate our present Beauty Parlor in the Hotel Harding.

Phone 2393

The new Beauty Parlor will be new in every respect and equipped with the most modern appliances obtainable.

YOU ARE INVITED TO COME IN AT YOUR CONVENIENCE OR
CALL NO. 2571 FOR APPOINTMENT.

SEPTEMBER NAVAL RECRUITING STARTS

Announcement of District Quota Made at Local Station

The navy recruiting station, located in American Legion Dugout, is now open for the enlistment of young men to fill the quota for September. The quota from this district is 30 men and as the district comprises most of the state it is expected that the quota will be filled in a few days.

ODD SITUATION ARISES



Jacqueline Logan, movie favorite, and Ralph Gillespie, Los Angeles real estate salesman, from whom she obtained a decree of divorce because he said that she was "dumb." Now she has been wed to Larry Winston, broker, in Mexico, and may be charged with bigamy if he makes her home with him in Los Angeles, according to authorities, who say that Jackie's decree is not final until next March.

Banks Kennedy Will Play Organ During Dedication

Has Been at Console in Canton Theater; Known to Radio Fans

An organist-composer and a radio artist who is well known by Marion fans who have heard him broadcast over station KYW at Chicago, has been sent to Marion by the management of the Palace theater to dedicate and play the Page organ during the opening weeks.

He is Banks Kennedy of Chicago who has been playing at the Palace theater in Canton, Ohio. He began early in life the study of the piano. His schooling was completed in the University of Chicago, where he had become interested in organ playing.

Kennedy made his start in the theater world as assistant organist and as his ability became established he was given a feature position on the bill at the Capitol theater in Chicago. He

Beery-Ralston Team.
Los Angeles, Aug. 28.—Wallace Beery and Esther Ralston will become a team for Paramount, in "The Case of Lena Smith." John Leder, imported European actor, will have the juvenile role in the same picture.

Family Reunions

Members of the Willey family held their seventh annual reunion Sunday at the home of Mrs. E. V. Willey, near Ashley, with 44 in attendance.

After dinner Mrs. R. H. Peak, president, and Mrs. Mart Pettit, secretary, presided for a program and contests. Readings were given by Edith Downing, Alma Pettit, Lavella Willey, Marie Pettit, Vivian Downing and Merlin Willey. Vendula Willey sang a solo. Contest honors were awarded Ruth Pettit, Vendula Willey, Cyril Willey, Lucy Pettit and Otto Willey.

During the business session the old officers were reelected for the coming year. Two births were reported for the

Family Reunions

year. The eldest member present was Mrs. E. V. Willey and the youngest was Robert Lewis Peak, son of Mr. and Mrs. Harold Peak, of near Marion.

At the close of the meeting it was decided to hold the next reunion at the home of Mr. and Mrs. Otto Willey, of Morral.

Present were Mr. and Mrs. Frank Gibson, Mr. and Mrs. Otto Willey and family, of Morral; Mr. and Mrs. Cora Willey, of Prospect; Mr. and Mrs. Noah Willey and family, Mr. and Mrs. Mart Pettit and daughter, Margaret and Marie and sons, Fred and Alma, Mr. and Mrs. Ray Pettit and family, Mr. and Mrs. Henry Downing and family, and Miss Lela Willey, of Columbus; Mr. and Mrs. R. H. Peak and daughters Bernice and Geneva, of Agawa; Mr. and Mrs. Harold Peak and son, Robert Lewis, Mr. and Mrs. Harry Welch and George Peak, of Marion.

Family Reunions

Guests from a distance included John Furness and his sons, Dr. Carl Furness and Elmer J. Furness, of Chicago, and Mrs. Caroline DeLong, of Indiana. Other guests came from Lancaster, Columbus and Marion county. The next reunion of the Furness family will be held at Columbus the last Sunday in August, 1929.

THOMAS DUTTON

The twenty-first annual reunion of the Thomas Dutton family was held at Brush Ridge, Aug. 26, with 70 present. A cafeteria dinner was served at the noon hour, after which the meeting was called to order by the president, Clifford Gilbert. Officers elected for the following year were: president, John Mitten; vice president, Mrs. Dora Shidler; secretary-treasurer, Mrs. Eliza Gabriel. The next reunion will be held the fourth Sunday in Aug., 1929, at Brush Ridge.

BOTTENFIELD

The descendants of Meeker Bottenfield held their reunion at the Prospect Community park Sunday with 82 members present. A basket dinner was enjoyed at the noon hour. Those present were: Mr. and Mrs. I. O. Barnhart and daughter, Shirley, Miss Helen Barnhart, George Barnhart, Mrs. Charles Underwood and son, Mr. and Mrs. Clifford Barnhart and son, Mr. and Mrs. Emory Parish and family, and Miss Velta Roberts, all of Marion.

Family Reunions

Mr. and Mrs. Lee Bottenfield, of Centerburg; Mr. and Mrs. G. J. Bottenfield and sons, of Robinson, Ill.; Mr. and Mrs. O. R. Smith and daughter, of Obion, Ill.; Mr. and Mrs. C. R. Feltz and son, of Toledo; Mr. and Mrs. Lee Barnhart, of Bucyrus; Mr. and Mrs. Pearl "enish and family, Mr. and Mrs. George Hardin, of Lakota; Mr. and Mrs. John Burnoskey and family, of near Delaware; Mr. and Mrs. Elmer Davis and children, of Wadco; Mr. and Mrs. Glen Carr and family, of Ripwood; Robert Roberts, of Akron; Mr. and Mrs. John Carr, Cora and Stella McNeal, Mr. and Mrs. B. J. McNeal and sons, Mrs. Fanny Roberts and son, Ralph, Mr. and Mrs. W. J. Hinnest and children, Mr. and Mrs. Ernest Jacobs and family, Mr. and Mrs. Charles McNeal and family, all of Prospect.

WORLEY

The fourth annual reunion of the Worley family was held at the home of Mr. and Mrs. Carl Hammond near Mt. Blanchard, Saturday. Members were present from Columbus, Toledo, Wauson, Findlay, Van Wert, Richwood and Marion. Officers elected for the coming year were: President, Mrs. Grace Cook, Chicago; vice president, L. H. Goethe, Toledo; treasurer, Mrs. Edna Weber, Toledo. The reunion next year will be held at the home of Mr. and Mrs. H. T. Bunnell, Mt. Blanchard, the fourth Saturday in August.

BIRTHDAY EVENT

Picnic Outing Marks Anniversary of Monnette Woman

Mrs. Mary Scott, of Monnette, and her daughter, Mrs. Frank Collins, Gallon, and Mrs. Charles Wilcox, Mansfield, were honor guests at a picnic dinner held Sunday at Sherer's grove, near Monnette. Mrs. Scott is 77 years of age. The celebrant received a number of remembrances. A picnic dinner was enjoyed at the noon hour and the time spent socially.

Those present were Mr. and Mrs. Frank Collins and son, Bobby, Gallon; Mr. and Mrs. George Rieckecker and daughter, Mary Margaret and son, Scott, Miss Harriet Scott, Sulphur Springs; Mr. and Mrs. Charles Wilcox and daughter, Bertha, Mansfield; William Baldosser and son, Clarence, Misses Donna and Loreane Cosgrove, Bob Myers, Mr. and Mrs. Elwood Spald and son, Eugene, Bucyrus; Miss Dorothy Green, Detroit; Mr. and Mrs. Joe Ward, Mr. and Mrs. Lewis Lupton, Mr. and Mrs. William Honaker, and children, Marion; Mr. and Mrs. William Scott and children, Maxine and Robert, Kirkpatrick; Mr. and Mrs. Floyd Swisher and children, Donald and Annabell, Mr. and Mrs. W. A. Swisher, Caledonia.

THEATER SOLD FOR \$100
Twin Falls, Idaho, Aug. 28.—L. L. Millon and E. S. Wood have purchased a theater, including building, in Kimberly, for \$100. It was a tax sale.

Congratulations

to the

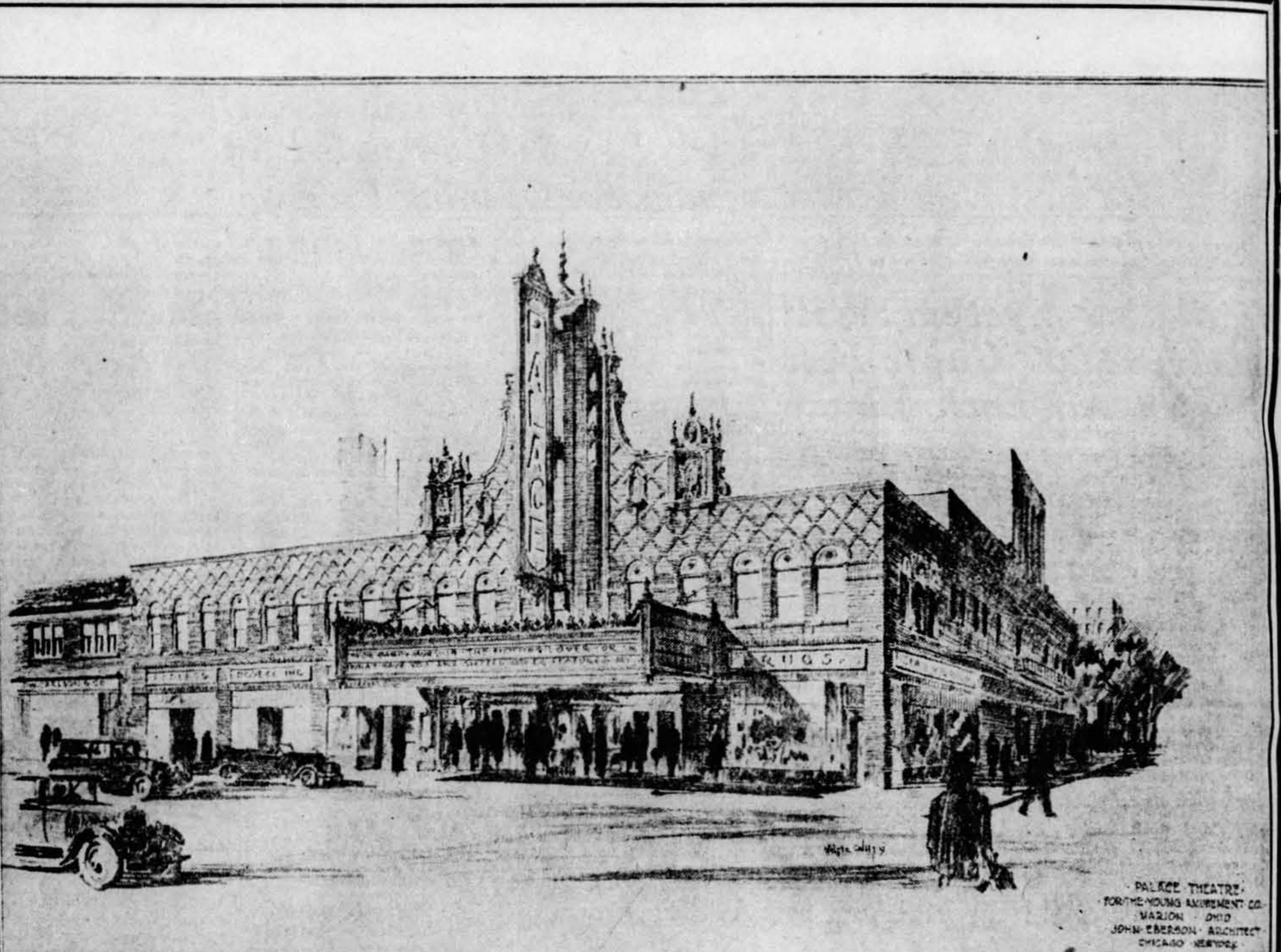
Management of the

PALACE THEATRE

The Management

of the

GRAND & MARION THEATERS



PALACE THEATRE FOR THE MORGAN AMUSEMENT CO. MARION, OHIO JOHN EBERSON ARCHITECT CHICAGO, ILLINOIS

WELCOME

We cordially join in congratulating the new Palace Theater Company upon the completion of its building project and bringing to Marion this most modern amusement center.

The Vanatta
HARDWARE COMPANY
Hardware - Paints - Stoves - Electrical Goods

We Congratulate Marion

Upon the Acquisition of the

PALACE THEATRE

D. W. McGRATH & SONS

225 E. Broad Street Columbus, O.

GENERAL CONTRACTORS FOR EVERY TYPE OF BUILDING.

BUILDERS OF THE PALACE THEATER