

HOTEL AND THEATER BY MESSRS. FABRE AND HILDEBRAND

TWO buildings recently completed by Fabre and Hildebrand, architects, of San Francisco, are illustrated in this number. One of these, the Alta Mira Hotel at Sausalito, Marin County, replaces an old land mark razed by fire in 1929. The fan-shaped structure has a unique setting in the picturesque Marin hills with pleasing outlook from practically every room.

A maximum amount of sunshine is an added asset to the hostelry—a three-story re-inforced concrete building with fire resistant, double sound proofed floors and walls, steam heat, polished maple floors for dancing and a radio in each guest room. The dominant notes of the Alta Mira are its distinctive simplicity and dignity. The general principals of Florentine-Italian architecture have been successfully adapted to the topography, climate and needs of American life. The building has one entrance on Harrison Street, but the main entrance is by the garden from Bulkley Avenue through an arcaded loggia. From the vantage point of this spacious and sheltered loggia one of the magnificent views of the Bay, for which the hills of Sausalito are famous, is to be had. The new hotel, set in its charming hillside surrounding, will impress one with the change which the

boosters of marvelous Marin have wrought in an old song. As sung by the Italian bard it went "See Naples and Die", but "See Marin County and Live" is the modern way.

While the exterior of the hotel is of imposing design, it is within its walls that one is arrested by the appeal of surroundings—a subtle charm of appointments and architectural form that suggest a sense of warmth, comfort and individual beauty.

In the near future it is the intention to build an annex to the South of the present building containing rooms with baths and a social hall on the first floor.

Separate cottages will also be built around the grounds on the order of those at Del Monte and the Ambassador Hotel, Los Angeles. (See Airplane View.)

One of the great attractions of the Alta Mira site are its trees and shrubbery. Besides rare specimens of eucalyptus, Irish Yew trees, rubber trees, Monterey, Italian and Lawson cypress, there are huge magnolias and colorful flower beds scattered throughout the grounds.

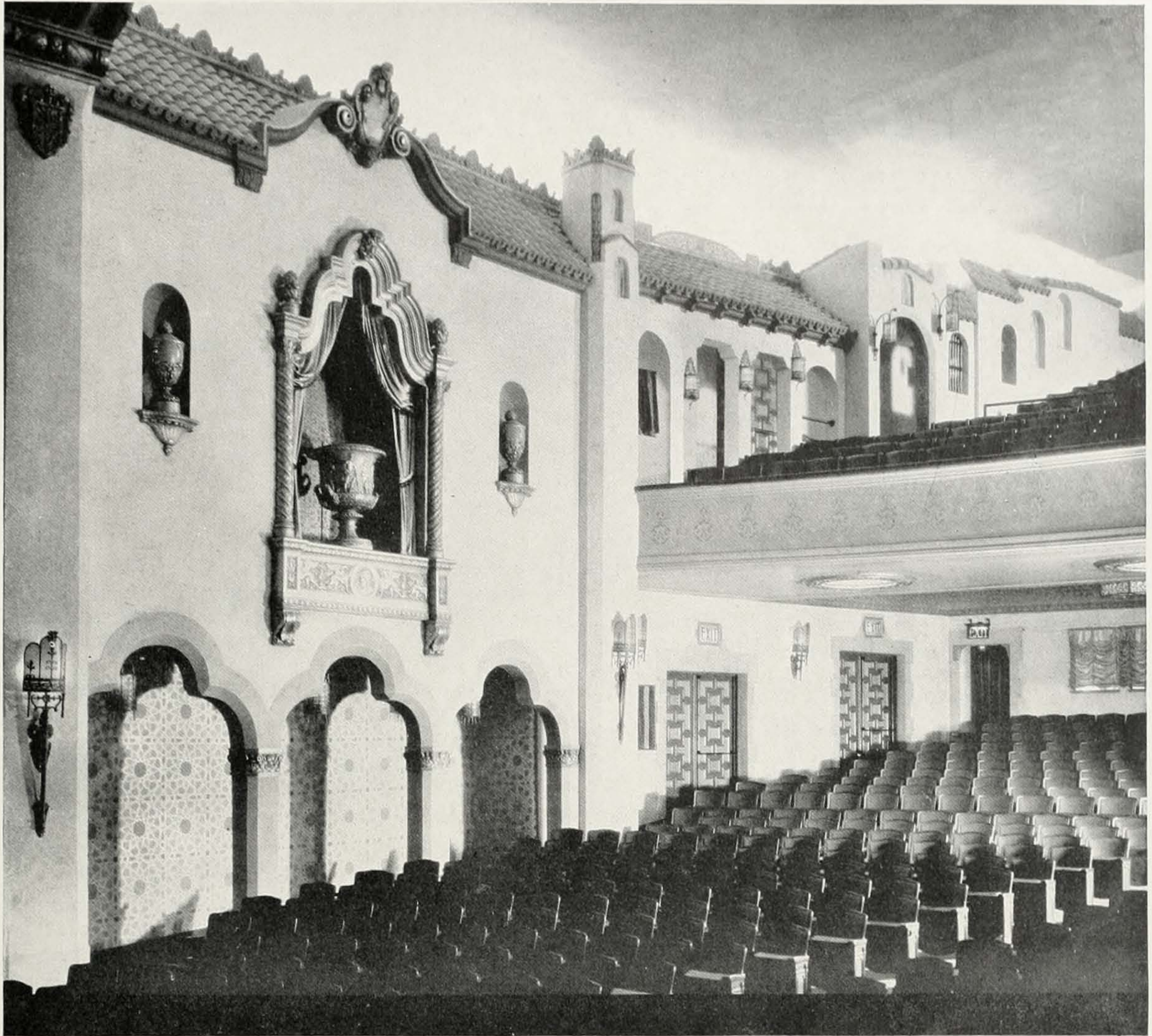
* * *

In the new Uptown theater, San Francisco, Messrs. Fabre and Hildebrand, have successfully combined the early Spanish style with the new forms of California architecture. There are gay colors, jazzy patterns, bright patches of light and unusual details everywhere to interest and please the theater patrons.

Beautifully wrought iron lighting fixtures, heavily padded carpets, luxuriously



STAIRCASE TO MEZZANINE, UPTOWN THEATER, SAN FRANCISCO
FABRE & HILDEBRAND, ARCHITECTS



INTERIOR, UPTOWN THEATER, SAN FRANCISCO
Fabre & Hildebrand, Architects

furnished dressing rooms and a mezzanine lounge extending the entire width of the theater, are some of the interesting details.

The mezzanine lounge is generously equipped with restful furniture for the comfort of waiting patrons. Stairways at either end connect the lobby and mezzanine, although it is not necessary to pass through the mezzanine to approach the balcony and loge section. Short ramps lead directly to the forward part of the balcony, the entire lower section of which is devoted to wide, deeply upholstered loge chairs.

From the loges an impressive view is obtained of the interior. The Uptown being atmospheric, much attention has been given to sky and lighting effects. The camouflage of open sky, airy distances and the substantial character which has been given the construction of picturesque houses, which comprise the side walls of the theater, has been achieved with much realism. The audience would seem to be seated in an open court, surrounded by adjoining tiled roofed structures with decorative balconies. There are arched promenades or covered passageways at either side of the main auditorium.