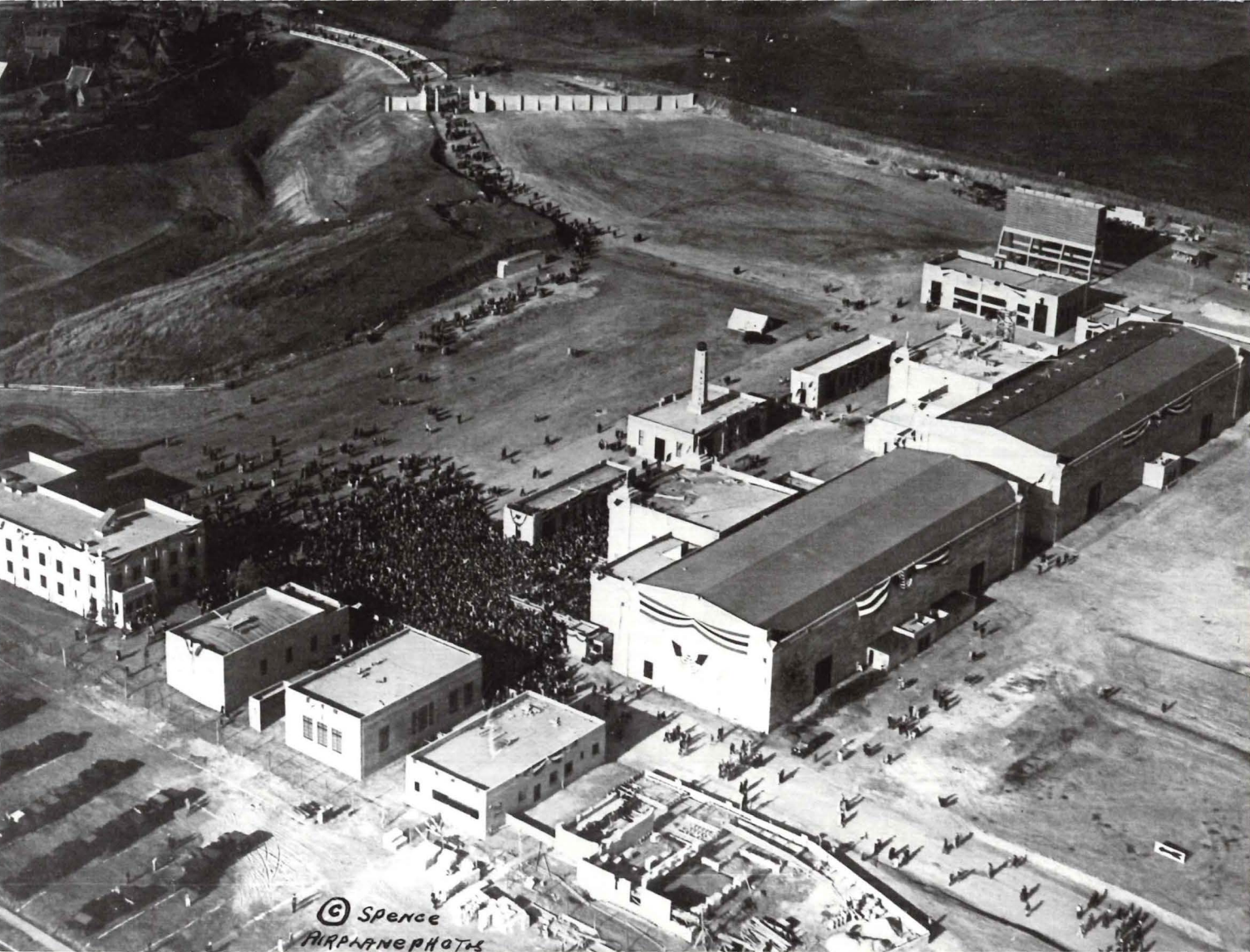


96 YEARS ON THE **FOX** STUDIO LOT





© Spence
AIRPLANE PHOTOS

96 YEARS OF HOLLYWOOD HISTORY: THE FOX STUDIO LOT

In 1928, FOX Film Corporation's principal studio, dubbed Movietone City, opened in West Los Angeles. Unlike the production lots of nearby Hollywood, many of which had grown in somewhat random fashion, Movietone City was a planned development. It was laid out like a miniature city, with 'factory' buildings in one section, offices nearby and residences southeast of the main commercial core. The street system was enhanced by small squares and pocket parks. Each building constructed between 1928 and 1932 had a role in film production, from the ornate administration buildings and soundproof stages to more utilitarian support facilities. As home to the first production stages ever to be built for the 'talkies,' Movietone City heralded FOX's dominance in both new sound technology and the entertainment industry.

It was at the FOX Studio Lot that some of the biggest stars could be found (Shirley Temple, Marilyn Monroe, Mel Brooks) and where films that would become cultural touchstones (*The Sound of Music*, *Butch Cassidy and the Sundance Kid*, *Die Hard*) were made. A visit to the Fox Studio Lot is a visit to hallowed ground in the annals of Hollywood history.

96 years later, much of Movietone City remains unchanged, though the lot it sits on has grown to encompass 15 sound stages, screening rooms, post-production facilities and four commissary eateries, in addition to other filming locations.

And more development is in store. FOX Corporation, which retained ownership of the lot when most of its entertainment assets were acquired by Walt Disney Co. in 2019, has announced plans for a \$1.5 billion upgrade to add more facilities to meet the demand of renters looking to utilize the space for television and movie production.

The Conservancy recognizes the need for the FOX Studio Lot to grow and adapt, and is providing guidance on how it can do so while still retaining the historic elements that speak to its legacy. For the last year, the Conservancy has worked closely with FOX representatives on its long-term master plan. No stranger to working with Hollywood

Left: The FOX Studio on its opening day in 1928. Right: Pico Avenue in the 1940s.

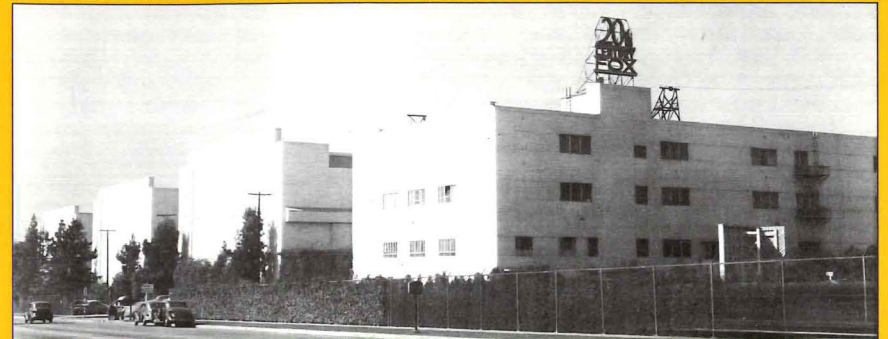
studios, FOX is one of many that, over the years, has been positively impacted by the Conservancy's advocacy efforts.

For example, the Conservancy was intrinsic in pushing for sensitive new construction and the adoption of a clear design review process with the City's Office of Historic Resources when, in 2015, Paramount Pictures proposed an ambitious master plan to guide improvements to its Hollywood studio lot.

In 2018, the Conservancy worked with CBS and community members to have Television City in the Fairfax District designated as a Historic-Cultural Monument (HCM), and recently has been working with Hackman Capital Partners to ensure that a proposed new development surrounding it is compatible.

Currently, the Conservancy is assessing the potential impact of \$1 billion dollars' worth of proposed upgrades to the historic Radford Studio Center in Studio City.

For decades, the Conservancy has been dedicated to finding win-win solutions in its work on Hollywood studios—including FOX. The goal of ensuring economic viability for an ever-evolving industry needs to be balanced with protecting the historic legacy of these rich, storied, and irreplaceable places. The FOX Studio Lot is in its 96th year of existence. Changes have occurred to the site, and changes will continue to happen. But sensitive development and constructive partnerships can result in what the FOX Studio Lot is a shining example of—a productive, operating studio committed to preserving its historic integrity. Here's to the next 96 years!



96 YEARS ON THE
FOX
STUDIO LOT
THE STARS OF FOX



For nearly 100 years, some of the brightest stars and most popular films in Hollywood history have been made right here on the FOX Studio Lot. In the early 1930s, when FOX acquired a pint-sized starlet named Shirley Temple, her massive popularity brought much-needed escapism to Depression-era audiences. Thanks to Temple, the studio's major return on investments allowed them to bank on other, more ambitious projects. FOX's popularity streak continued into the 1940s with a string of successful Technicolor musicals featuring Betty Grable, big-budget swashbucklers with Tyrone Power, and financially and critically successful vehicles for FOX stars like Gene Tierney and Alice Faye. In the 1950s, Marilyn Monroe became the studio's biggest box office asset, and some of her most legendary moments were filmed here. Over the next several decades, FOX would continue to create countless movie memories including *The Sound of Music*, *Hello, Dolly!*, and *Titanic*, and magic is still made every day on this storied lot.

ABOUT THE LOS ANGELES CONSERVANCY

The Los Angeles Conservancy is a nonprofit membership organization that works through education and advocacy to recognize, preserve, and revitalize the historic architectural and cultural resources of Los Angeles County. We believe that historic places tell great stories which give us a sense of place, help us learn who we are and what we value as a culture, and embody our shared history.



Special thanks to FOX FUTURE
for being the Lead Sponsor of the
FOX Studio tour.

Major funding for the Los Angeles Conservancy's
programs is provided by the LaFetra Foundation
and the Kenneth T. and Eileen L. Norris Foundation.

Brochure Design: J. Eric Lynxwiler, Signpost Graphics
Images: Marc Wanamaker/Bison Archives; © FOX Studio
Lot; © Twentieth Century Fox Film Corporation



LOS ANGELES
CONSERVANCY

523 West Sixth Street, Suite 826

Los Angeles, CA 90014

(213) 623-2489

laconservancy.org

© 2024, Los Angeles Conservancy. All rights reserved.

STOP 1 The Commissary

The studio commissary, known as the Café de Paris, was an integral part of studio life from the beginning. Designed to resemble a French bistro, the Commissary continues to host celebrities as it has since its opening in 1928. The walls of the Commissary are decorated with a large mural that depicts numerous countries from around the world, emphasizing the global nature of the film industry.



STOP 2 Movietone City

A good portion of the current lot was built by FOX Film Corporation between 1928 and 1932. It was originally known as Movietone City in honor of its new "movietone" sound process. It was the first complete film studio in Southern California built to accommodate the production of sound motion pictures. Unlike many studios at the time, Movietone City was a carefully planned development designed to mimic a small city with its own main street, residential area, and industrial core.



STOP 3 Newman Scoring Stage

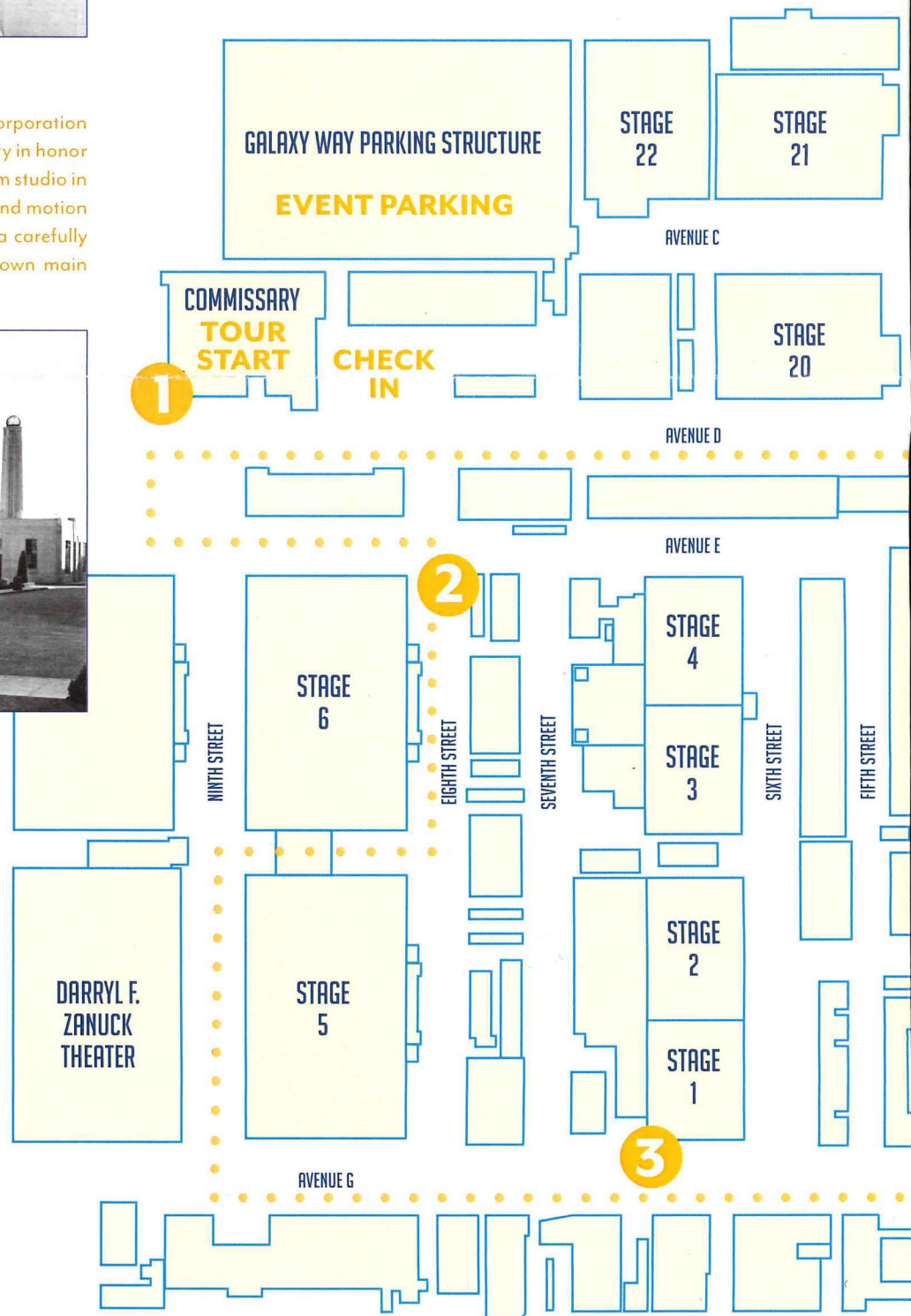
Serving as a scoring stage for television and film since the 1930s, the Newman Scoring Stage sat empty for years before reopening in 1997. Many beloved films have been scored here, including *The Sound of Music* and the original *Planet of the Apes*.



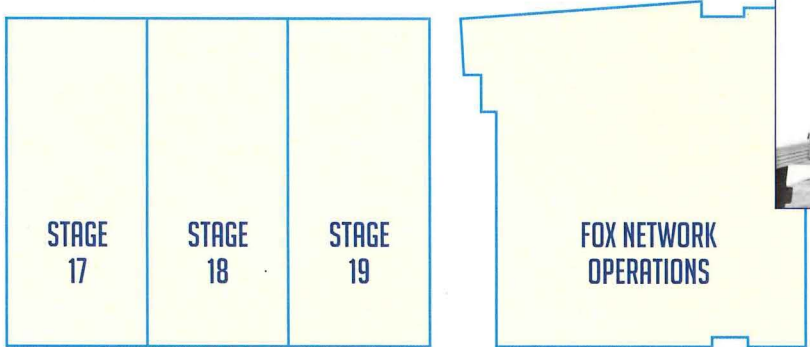
96 YEARS ON THE



On your tour, you will be escorted on a walk-through of the FOX Studio Lot beginning at the original Movietone City section. Please stay with your escort the entire time. **No photography or videotaping is permitted.**



STUDIO LOT



STOP 6 New York Street

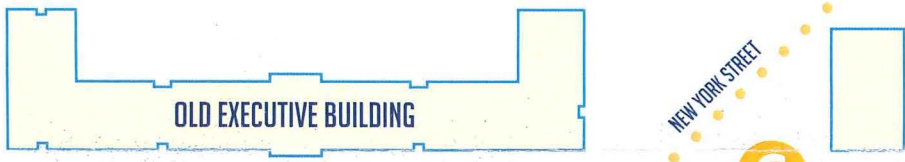
The original New York Street was built for *Hello, Dolly!* 1968. Since then, it has served as a backdrop for hundreds of TV shows, films, and commercials. In 2023, New York Street was upgraded with modern technology, and much of the building facades were either replaced or restored.



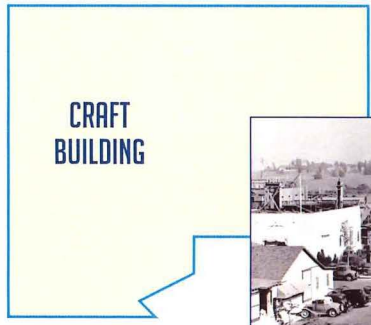
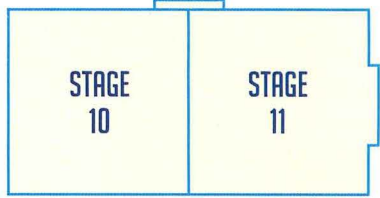
STOP 5 Artist's & Writer's Village

This collection of bungalows was built as part of the original Movietone City. They served as homes-away-from-home for actors such as Will Rogers, Marilyn Monroe, and Shirley Temple when they were filming on the lot. Many of these bungalows now serve as rooms for writers.

AVENUE OF THE PALMS



6



STOP 4 Tennessee Avenue Gate 6

Opening onto the now residential Tennessee Avenue, this iron gate was once the original Movietone City entrance. It may look familiar to Mel Brooks fans as it served as the entrance to a movie studio in the 1976 comedy *Silent Movie*.

FOURTH STREET

THIRD STREET

SECOND STREET

AVENUE F

4

5

TENNESSEE AVENUE