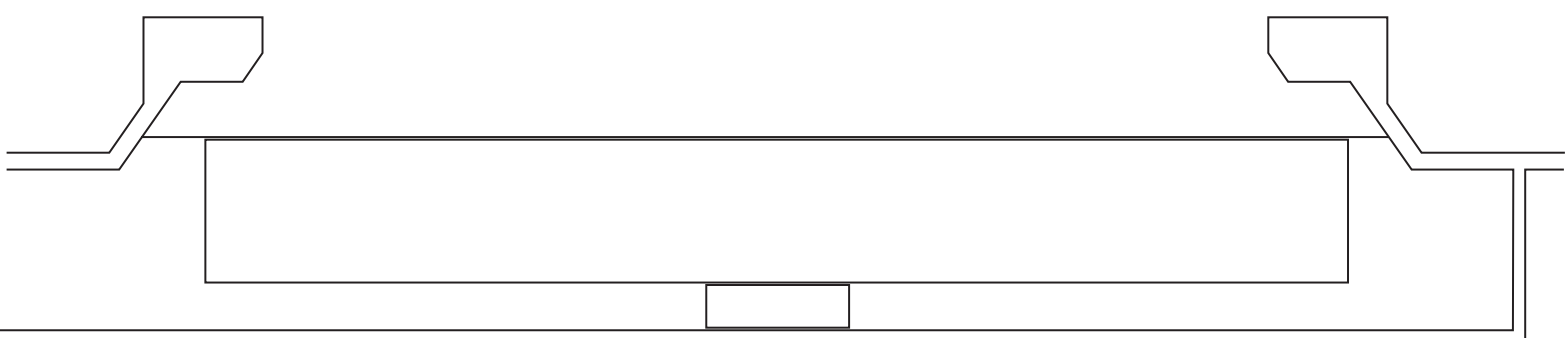
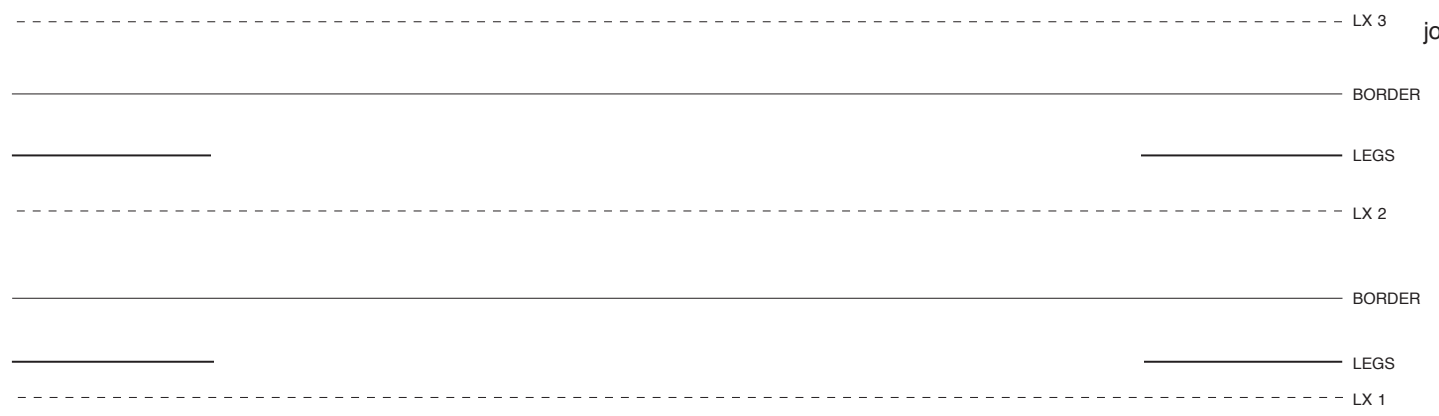
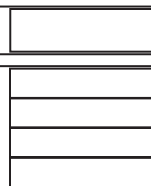


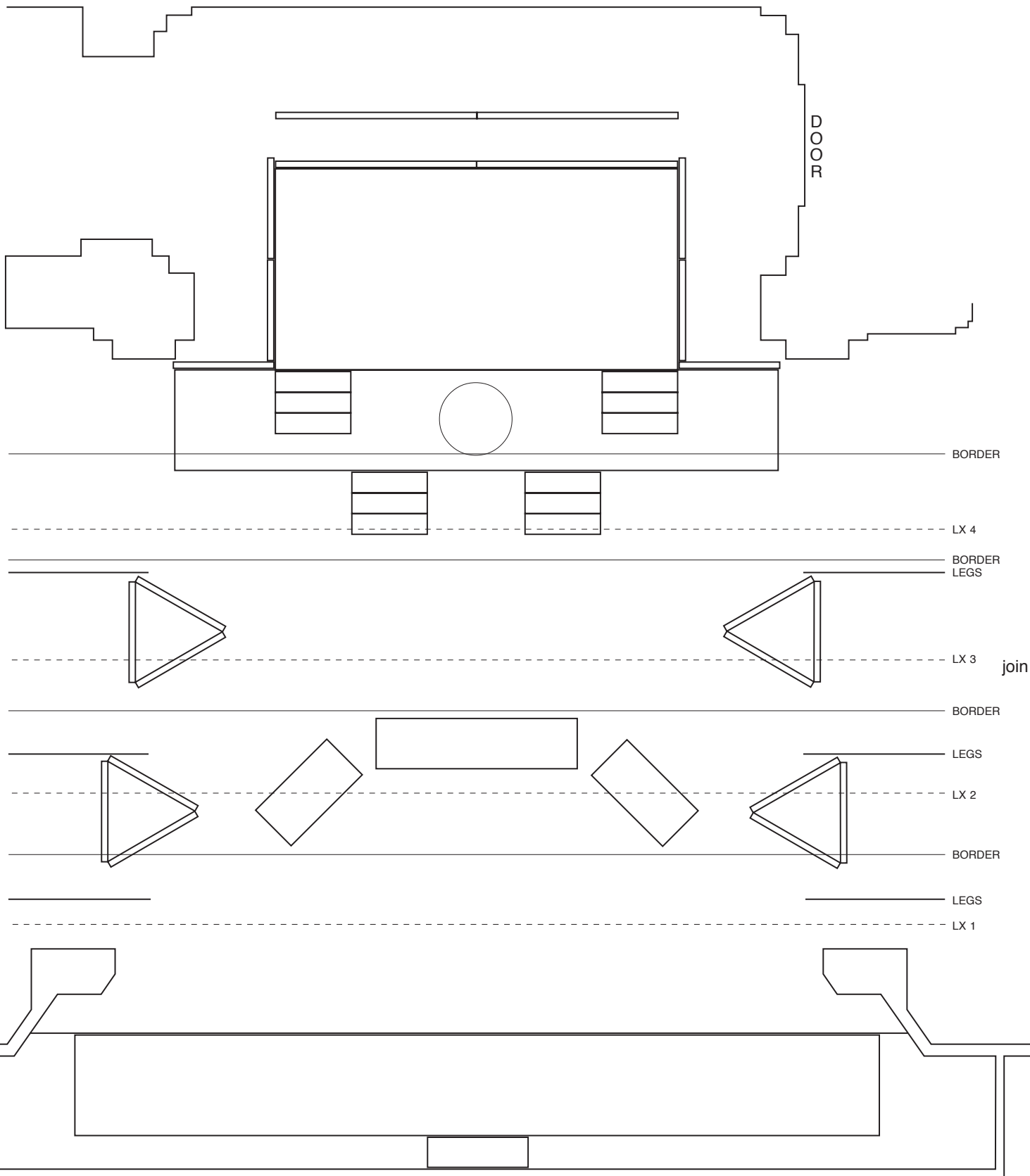
join

join

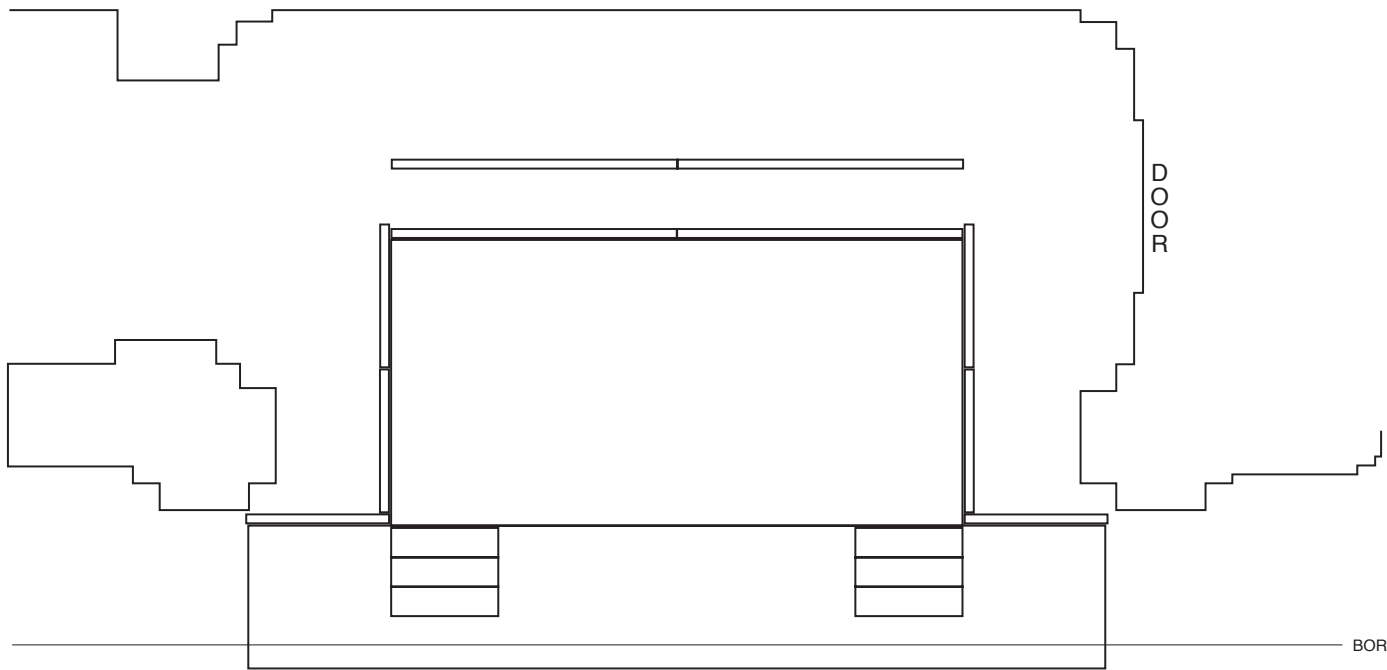


Show:	"Space Chase"
Venue:	Church Hill Theatre
Date:	December 1995
Scale:	1 inch represents 4 feet
Drawing:	Act I, Prologue
Drawn:	Mike Hume 10/95
Version:	1.1





Show:	"Space Chase"
Venue:	Church Hill Theatre
Date:	December 1995
Scale:	1 inch represents 4 feet
Drawing:	Act I, Scene 1
Drawn:	Mike Hume 10/95
Version:	1.1



BORDER

LX 4

BORDER
LEGS

LX 3

BORDER

LEGS

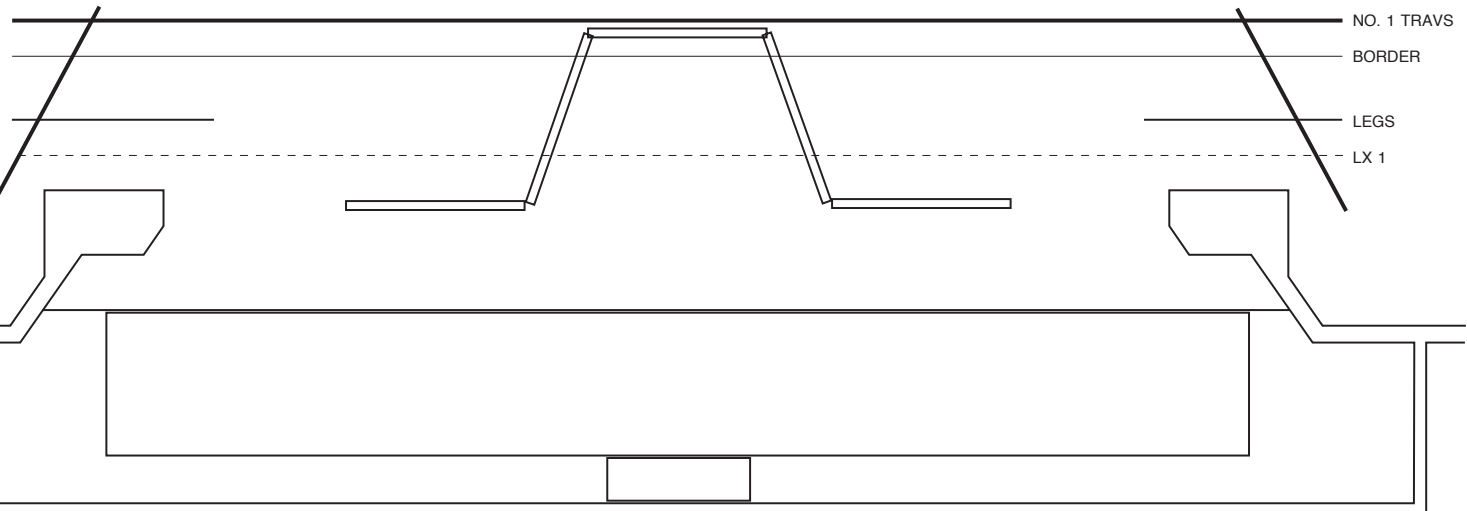
LX 2

NO. 1 TRAVS

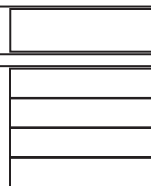
BORDER

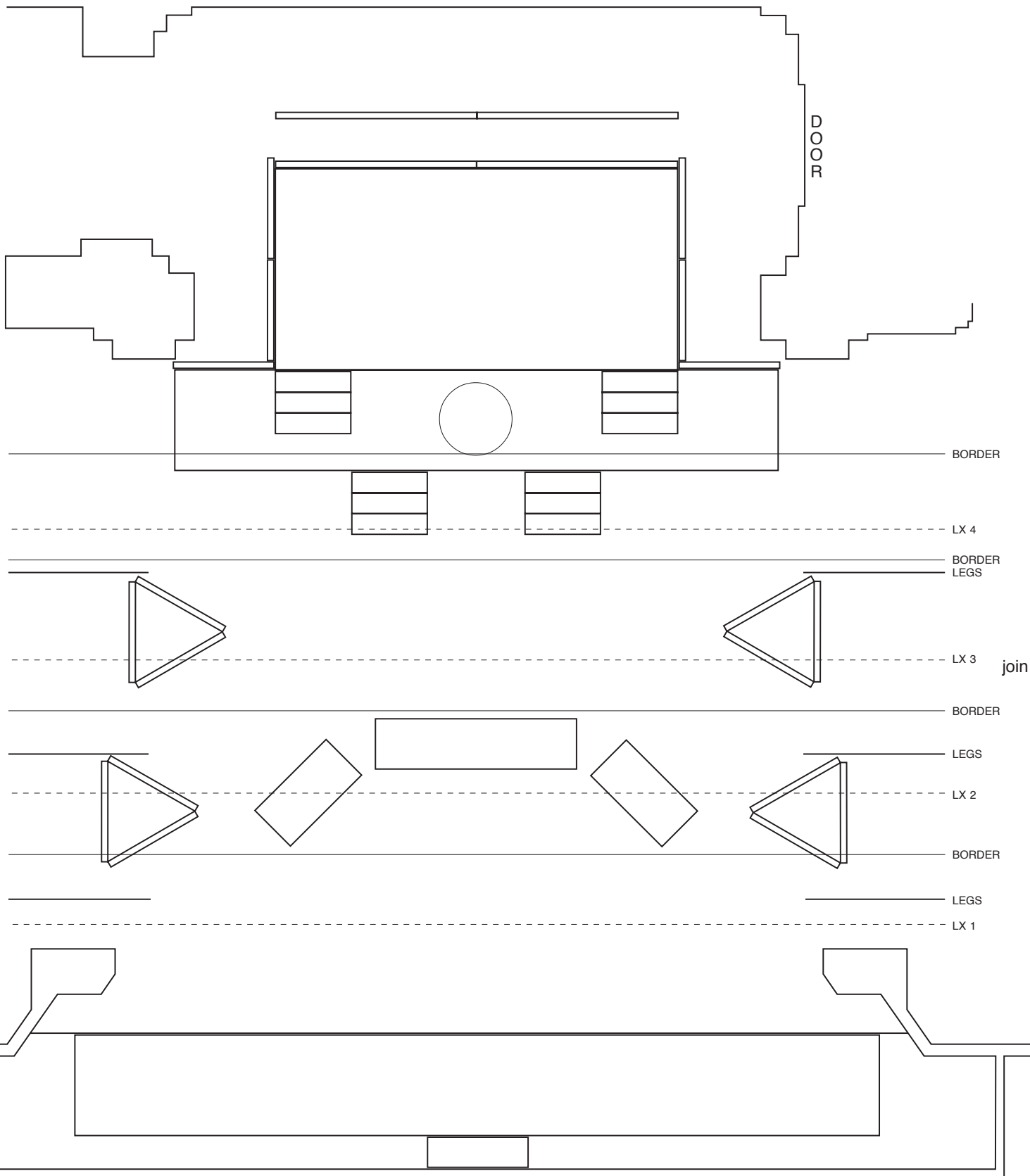
LEGS

LX 1



Show:	"Space Chase"
Venue:	Church Hill Theatre
Date:	December 1995
Scale:	1 inch represents 4 feet
Drawing:	Act I, Scene 2
Drawn:	Mike Hume 10/95
Version:	1.1





Show:	"Space Chase"
Venue:	Church Hill Theatre
Date:	December 1995
Scale:	1 inch represents 4 feet
Drawing:	Act I, Scene 3
Drawn:	Mike Hume 10/95
Version:	1.1

DOOR

BORDER

LX 4

BORDER
LEGS

LX 3

BORDER

LEGS

LX 2

NO. 1 TRAVS

BORDER

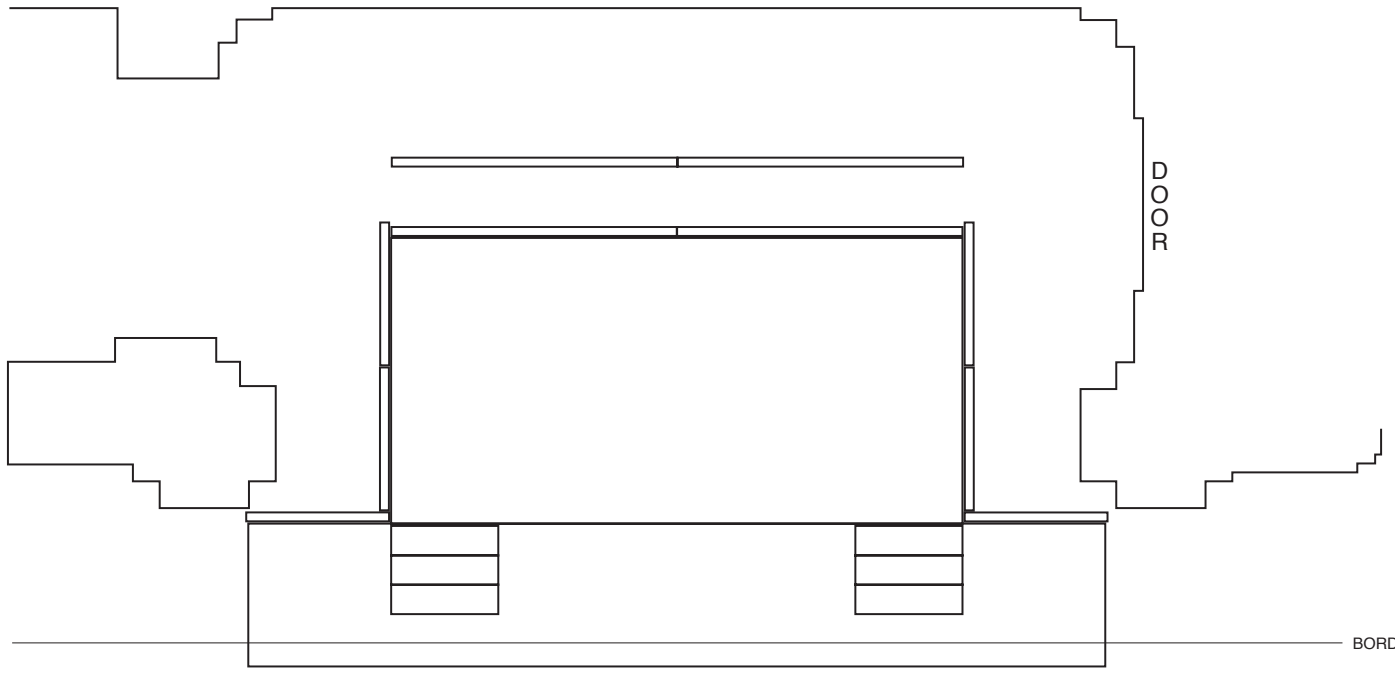
LEGS

LX 1

Show:	"Space Chase"
Venue:	Church Hill Theatre
Date:	December 1995
Scale:	1 inch represents 4 feet
Drawing:	Act I, Scene 4a
Drawn:	Mike Hume 10/95
Version:	1.1

join

join



BORDER

NO. 3 TRAVS

LX 4

BORDER

LEGS

PARACHUTE

TREE CLOTH

LX 3

BORDER

LEGS

LX 2

BORDER

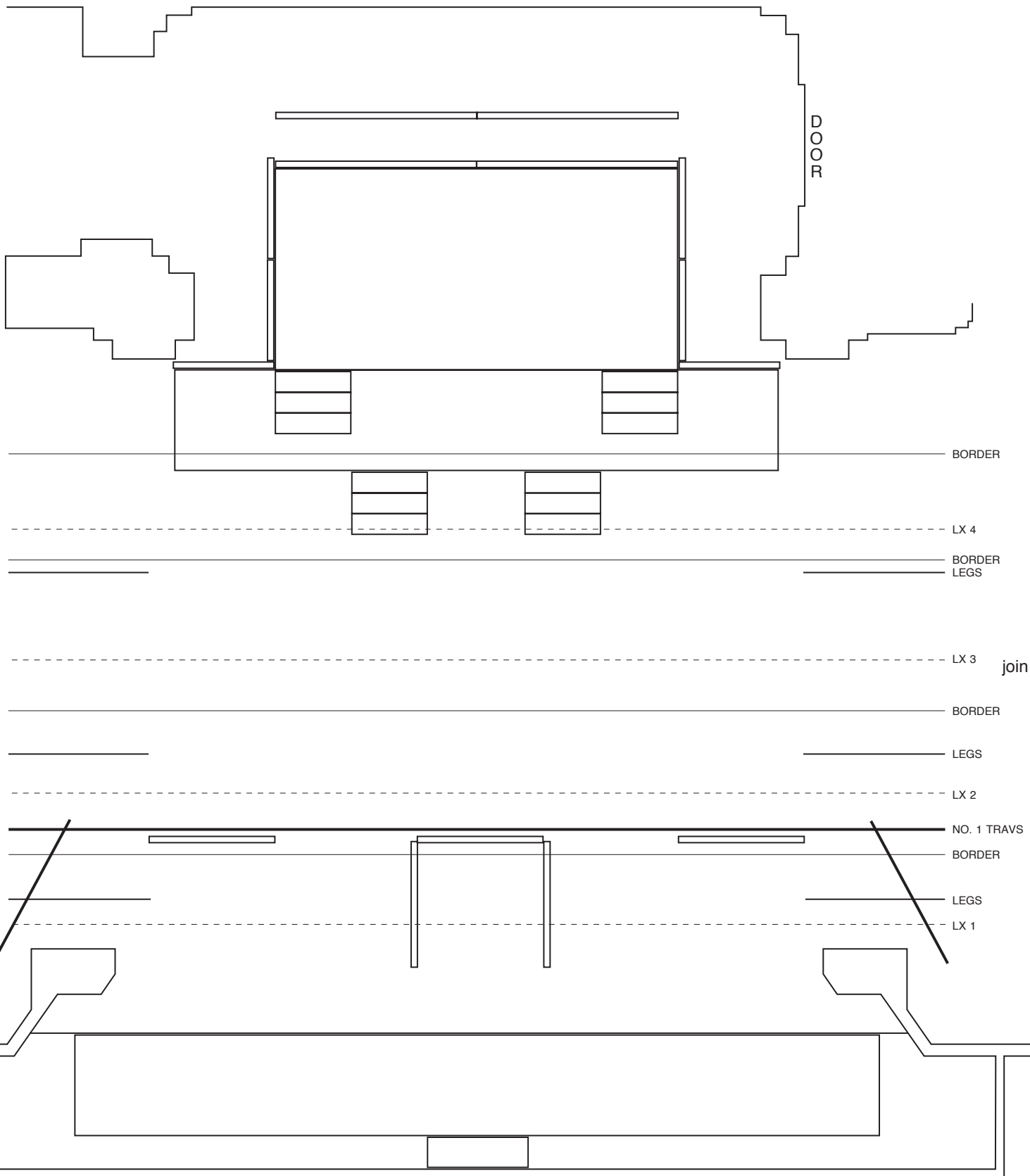
LEGS

LX 1

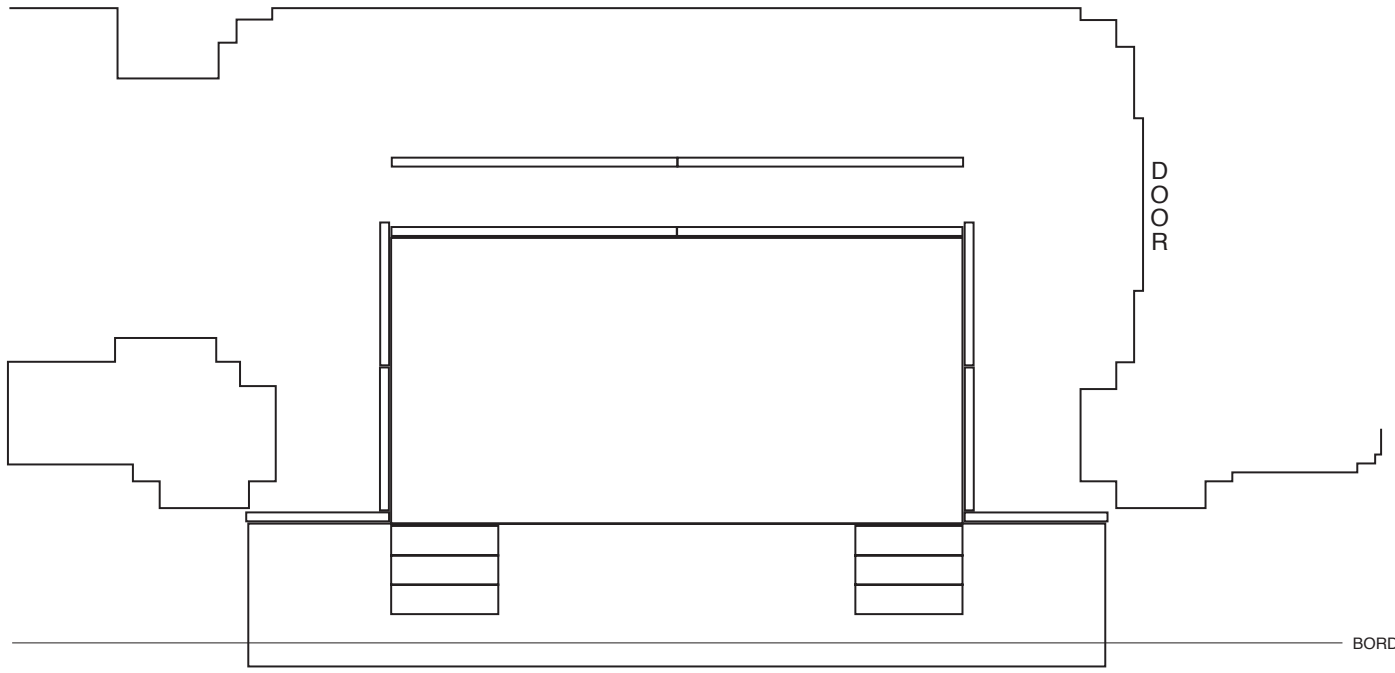
join

join

Show:	"Space Chase"
Venue:	Church Hill Theatre
Date:	December 1995
Scale:	1 inch represents 4 feet
Drawing:	Act I, Scene 4b
Drawn:	Mike Hume 10/95
Version:	1.1



Show:	"Space Chase"
Venue:	Church Hill Theatre
Date:	December 1995
Scale:	1 inch represents 4 feet
Drawing:	Act I, Scene 5
Drawn:	Mike Hume 10/95
Version:	1.1



BORDER

NO. 3 TRAVS

LX 4

BORDER
LEGS

TREE CLOTH

LX 3

BORDER

LEGS

LX 2

BORDER

LEGS

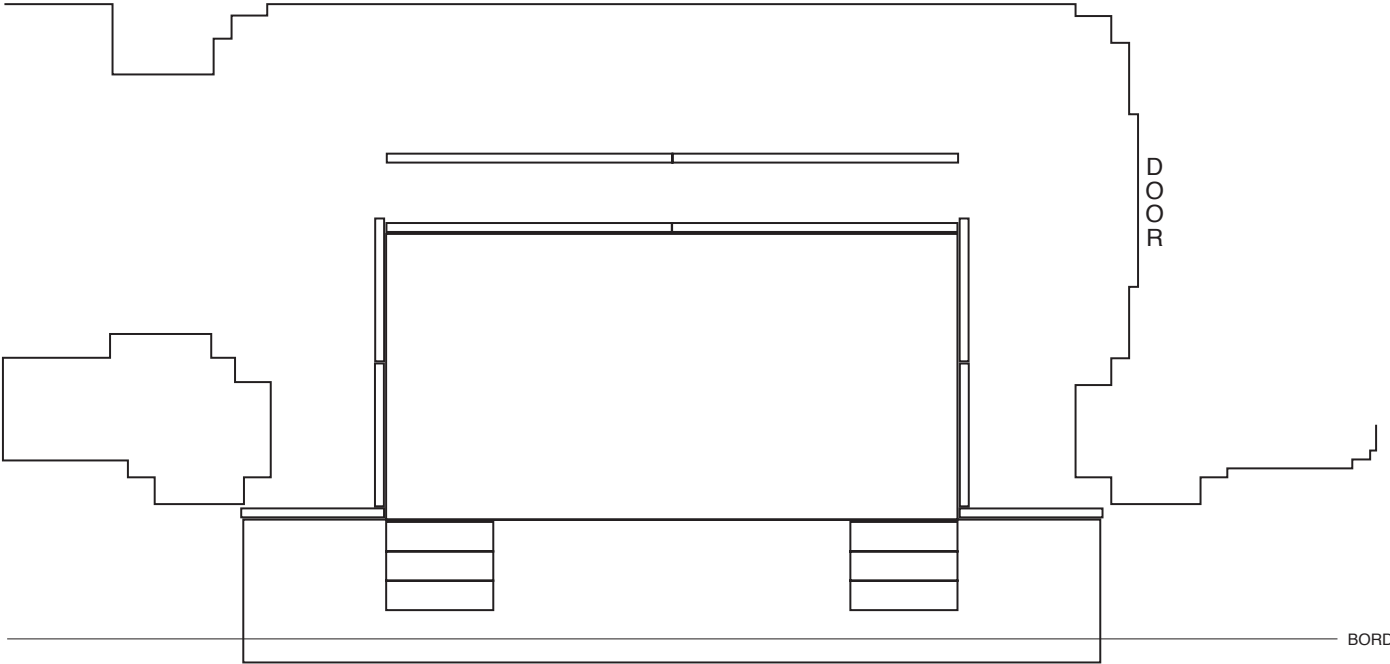
LX 1

join

join

Show:	"Space Chase"
Venue:	Church Hill Theatre
Date:	December 1995
Scale:	1 inch represents 4 feet
Drawing:	Act I, Scene 6
Drawn:	Mike Hume 10/95
Version:	1.1

DOOR



BORDER

LX 4

BORDER
LEGS

LX 3

BORDER

LEGS

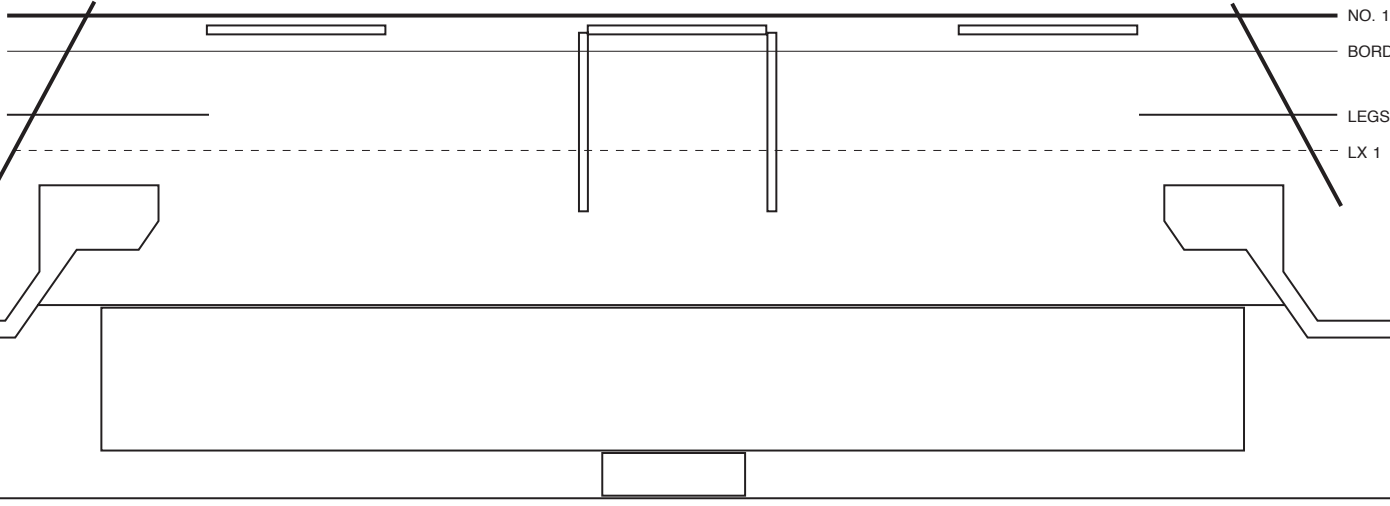
LX 2

NO. 1 TRAVS

BORDER

LEGS

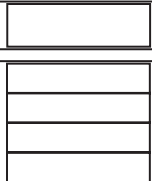
LX 1

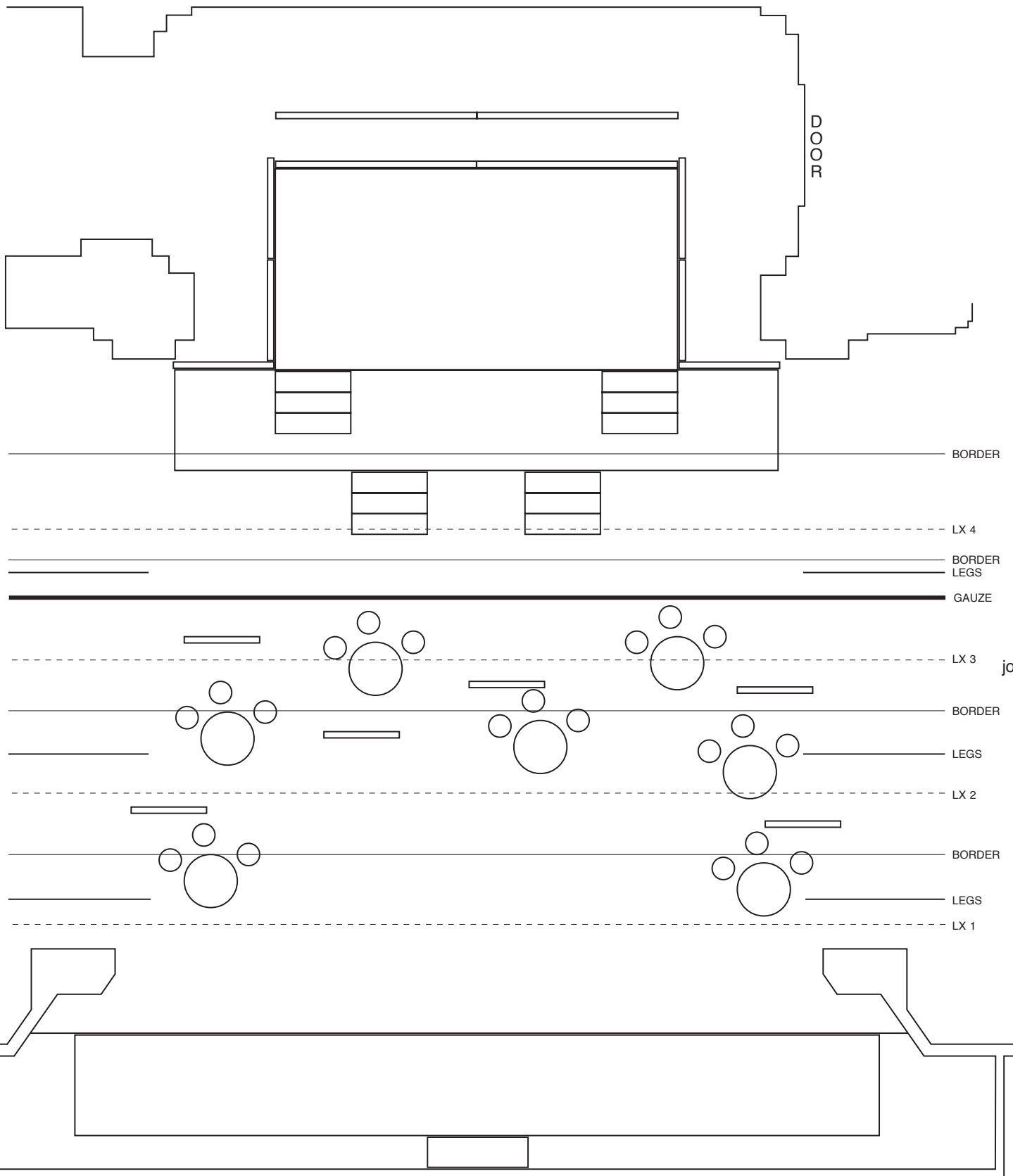


join

join

Show:	"Space Chase"
Venue:	Church Hill Theatre
Date:	December 1995
Scale:	1 inch represents 4 feet
Drawing:	Act II, Prologue
Drawn:	Mike Hume 10/95
Version:	1.1





Show:	"Space Chase"
Venue:	Church Hill Theatre
Date:	December 1995
Scale:	1 inch represents 4 feet
Drawing:	Act II, Scene 7
Drawn:	Mike Hume 10/95
Version:	1.1

DOOR

BORDER

LX 4

BORDER
LEGS

LX 3

BORDER

LEGS

LX 2

NO. 1 TRAVS

BORDER

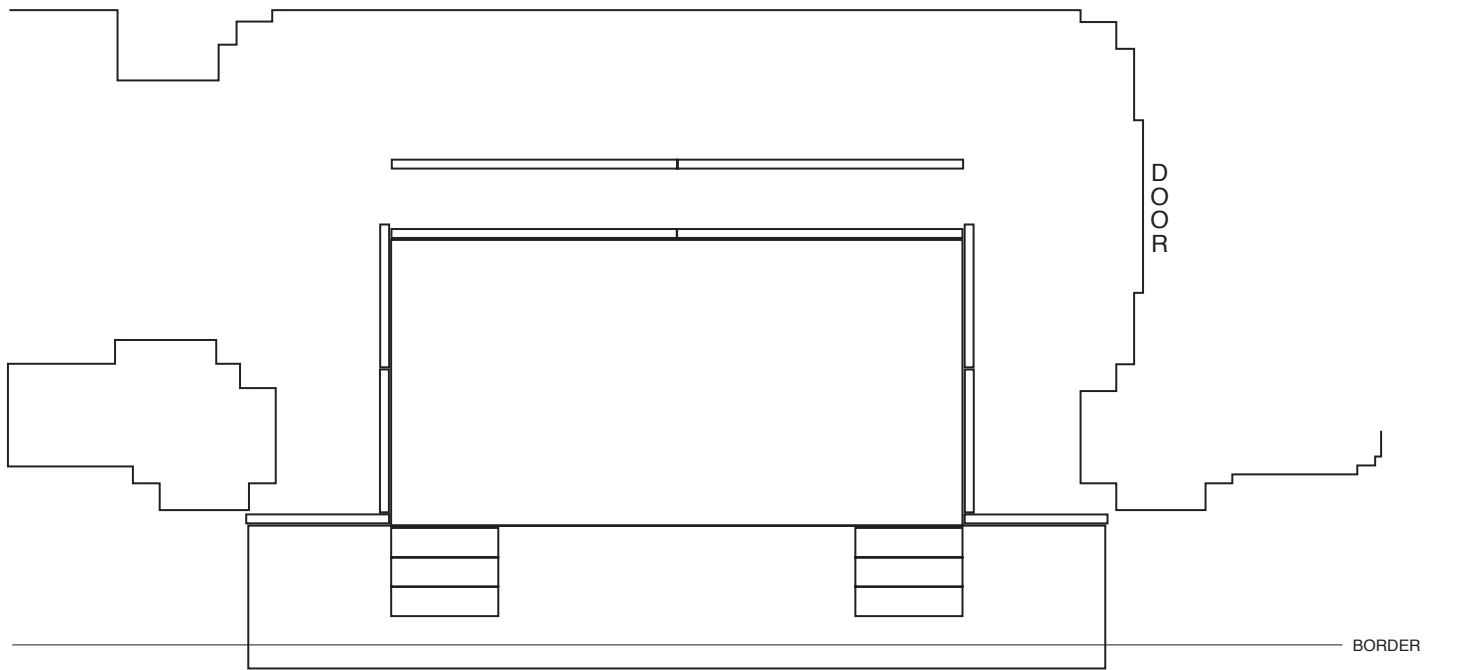
LEGS

LX 1

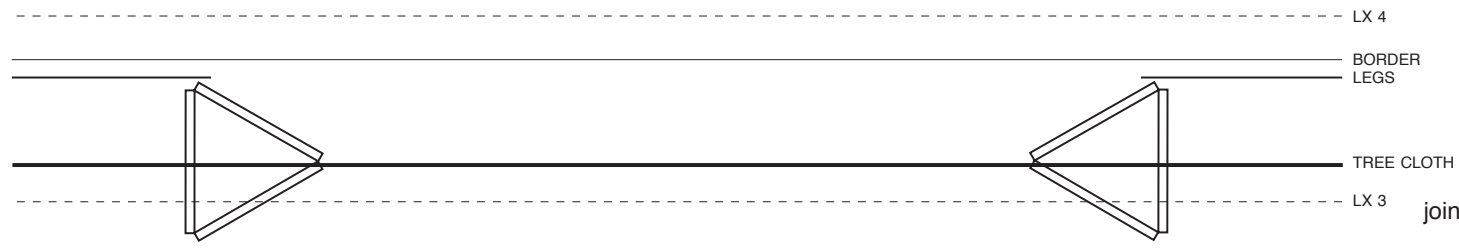
Show:	"Space Chase"
Venue:	Church Hill Theatre
Date:	December 1995
Scale:	1 inch represents 4 feet
Drawing:	Act II, Scene 8
Drawn:	Mike Hume 10/95
Version:	1.1

join

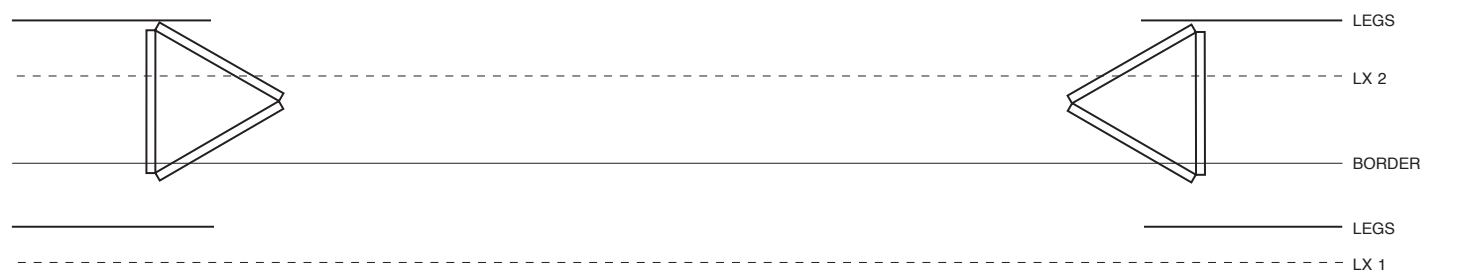
join



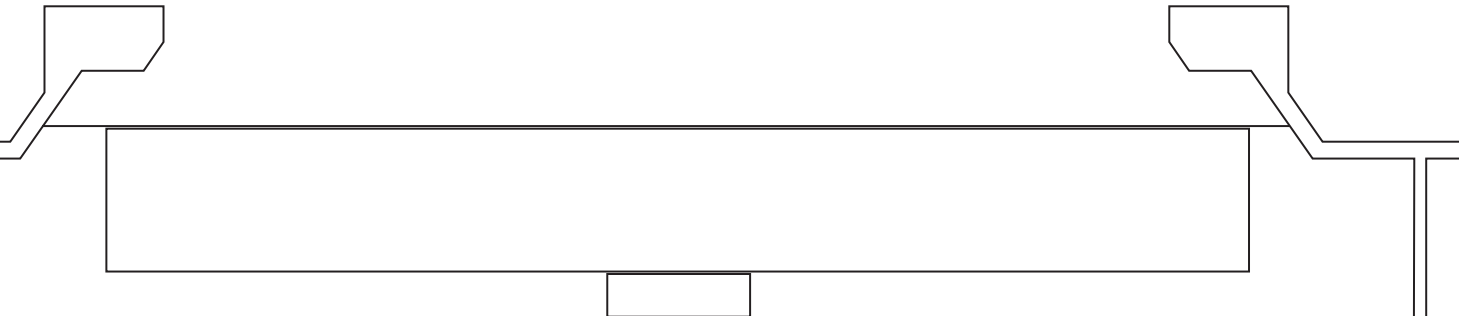
BORDER
NO. 3 TRAVS



LX 4
BORDER
LEGS
TREE CLOTH
LX 3
join

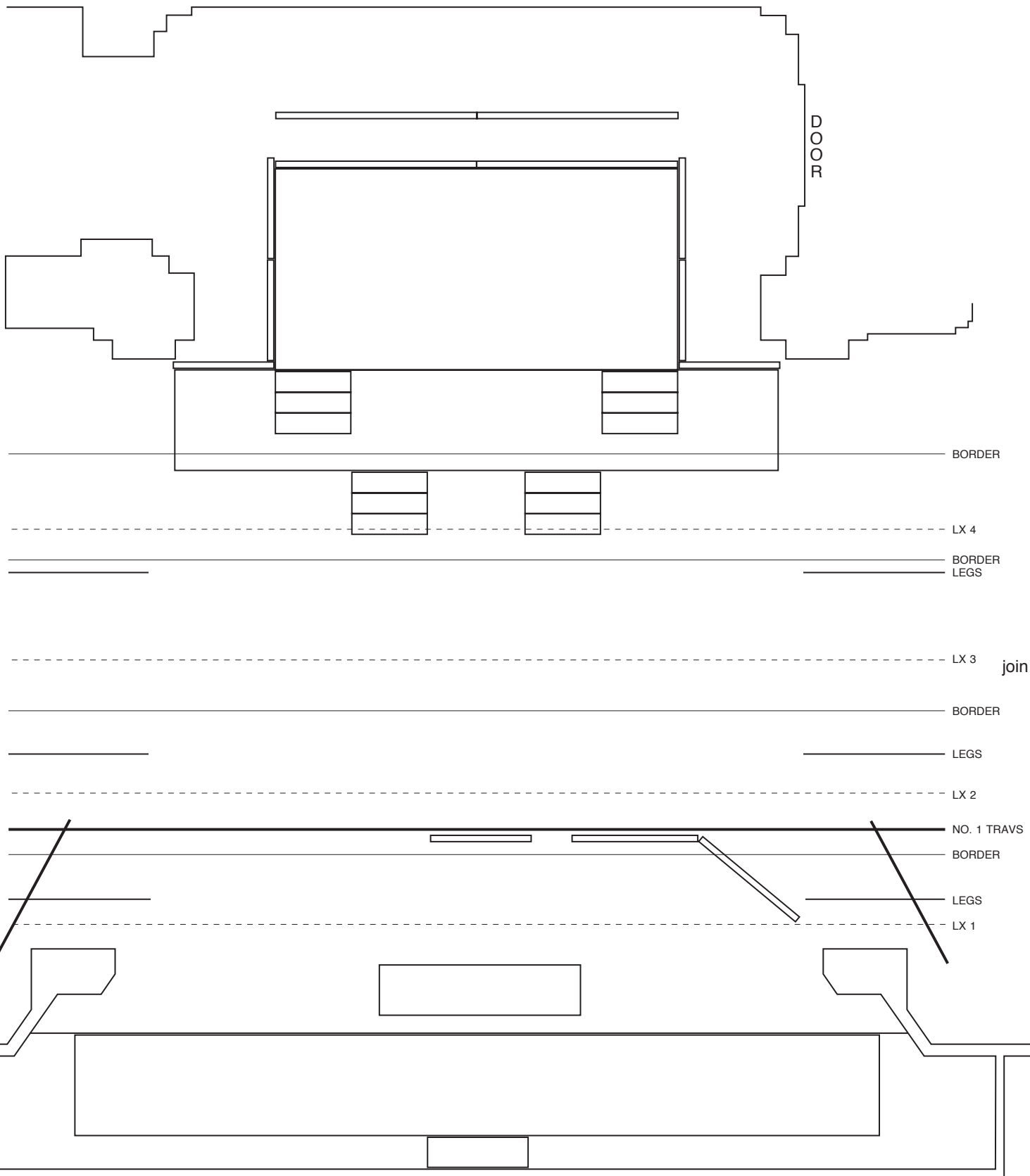


LEGS
LX 2
BORDER
LEGS
LX 1

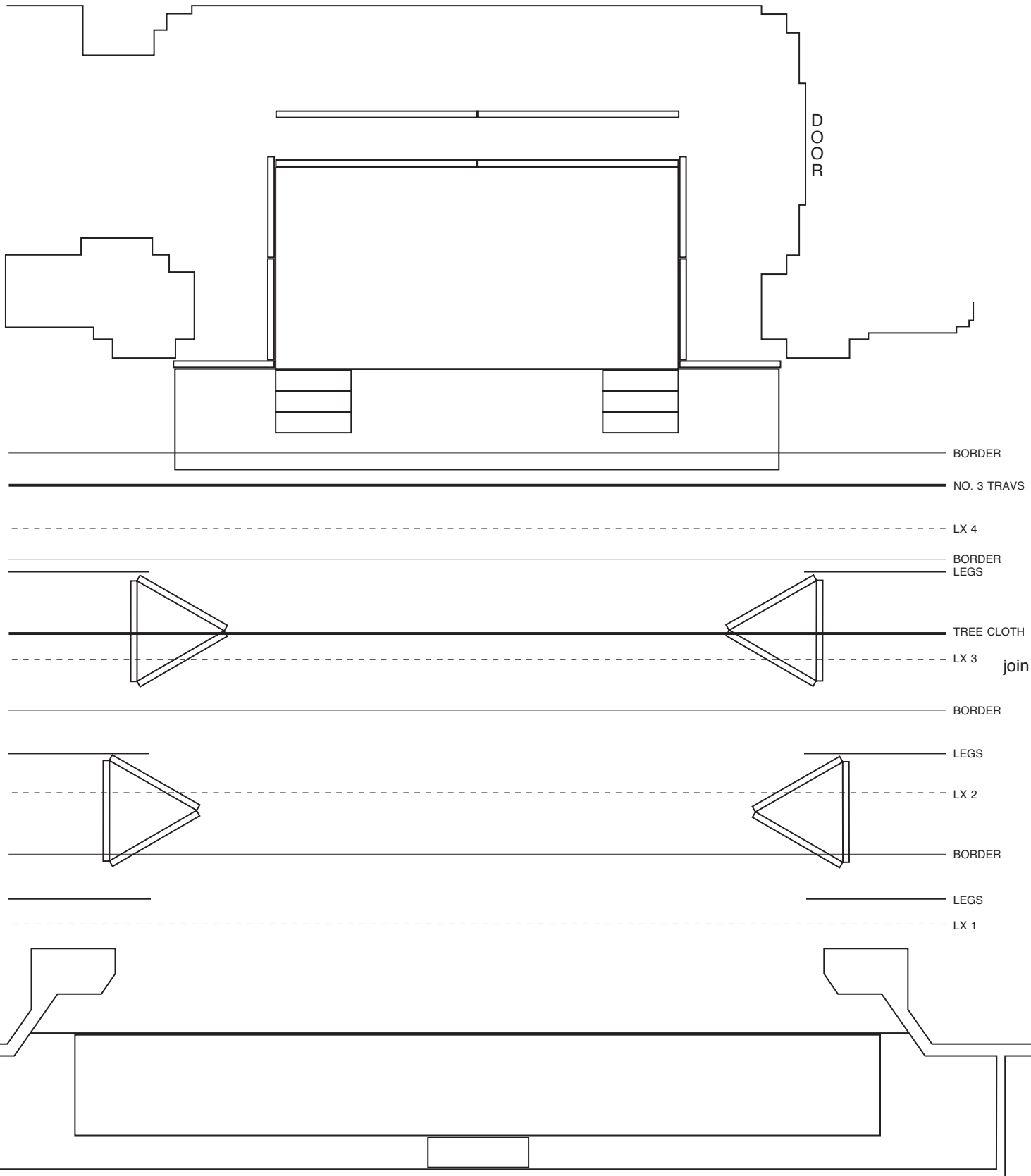


BORDER
NO. 3 TRAVS

Show:	"Space Chase"
Venue:	Church Hill Theatre
Date:	December 1995
Scale:	1 inch represents 4 feet
Drawing:	Act II, Scene 9
Drawn:	Mike Hume 10/95
Version:	1.1



Show:	"Space Chase"
Venue:	Church Hill Theatre
Date:	December 1995
Scale:	1 inch represents 4 feet
Drawing:	Act II, Scene 10
Drawn:	Mike Hume 10/95
Version:	1.1



Show:	"Space Chase"
Venue:	Church Hill Theatre
Date:	December 1995
Scale:	1 inch represents 4 feet
Drawing:	Act II, Scene 11
Drawn:	Mike Hume 10/95
Version:	1.1