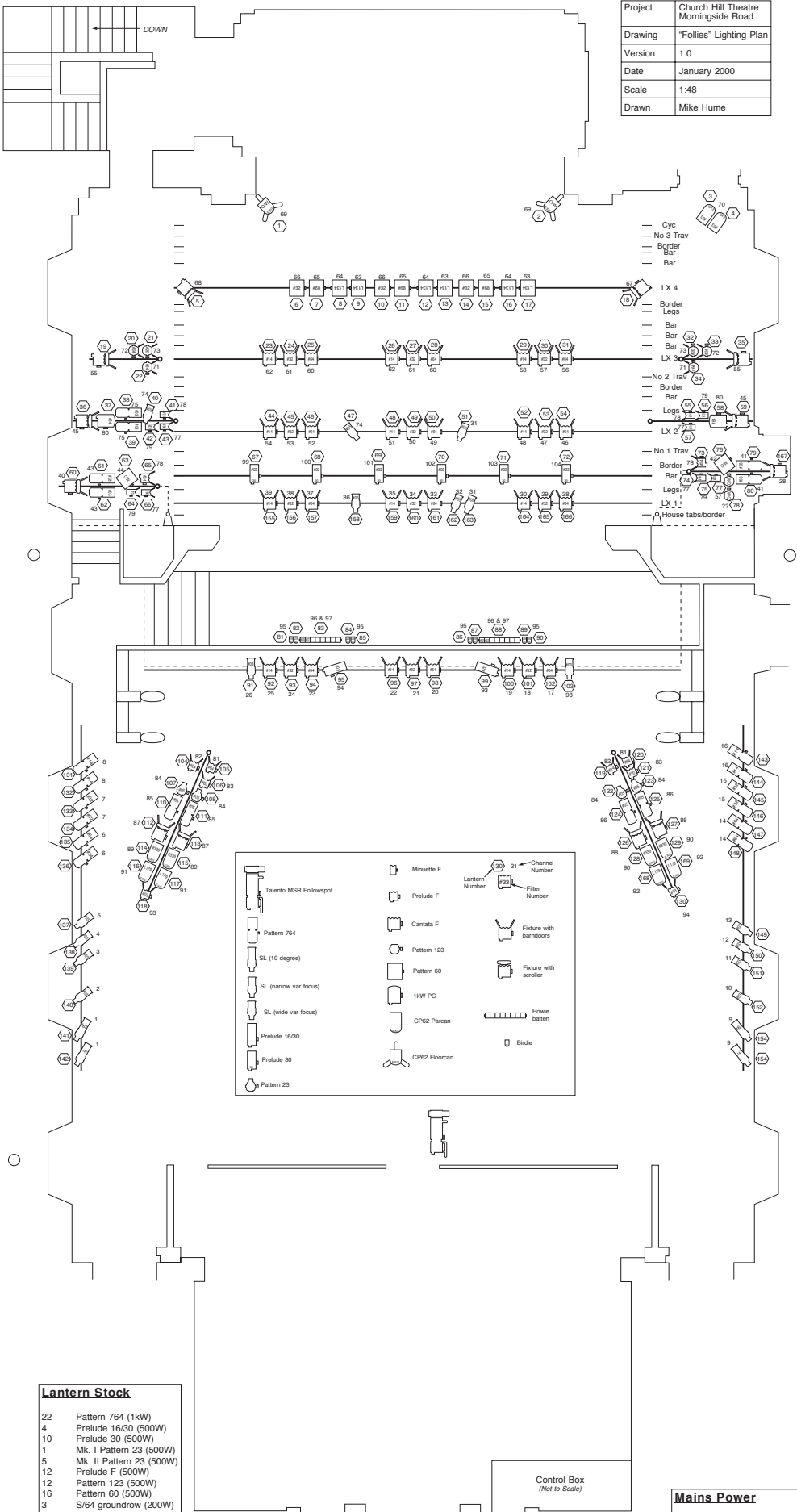


Project	Church Hill Theatre Morningside Road
Drawing	"Follies" Lighting Plan
Version	1.0
Date	January 2000
Scale	1:48
Drawn	Mike Hume



**Lantern Stock**

22	Pattern 764 (1kW)
4	Prelude 16/30 (500W)
10	Prelude 30 (500W)
1	Mk. I Pattern 23 (500W)
5	Mk. II Pattern 23 (500W)
12	Prelude F (500W)
16	Pattern 123 (500W)
3	Pattern 60 (500W)
	S/64 groundrow (200W)

**Bar Wiring**

(all single 15A outlets unless stated)

FOH SR:	Channels 1-8
FOH SL:	Channels 9-16
Canopy:	Channels 17-26
LX 1:	Channels 27-40
SL Perch:	Channels 41-42
SR Perch:	Channels 43-44
LX 2:	Channels 45-54
LX 3:	Channels 55-62
LX 4:	Channels 63-68 (63-66 @ 5kW)
USR Dip:	Channels 69-72 & 75-76
USL Dip:	Channels 69-74 (73-74 @ 5kW - 32A outlets)
DSL/DSR Dip:	Channels 77-78
CSL/CSR Dip:	Channels 79-80

LX 2: Channels 45-46 paired towards ends of bar  
 LX 3: Channels 55-58 paired towards ends of bar  
 LX 4: Channels 67-68 at either end of bar (67 at SL)  
 Channels 63-66: 3 outlets per channel along bar

**Fly Floor Patch Boxes**

(all single 15A outlets unless stated)

Box 1:	Box 2:
27 28 29 30	45 46
31 32 33 34	47 48
35 36 37 38	49 50
39 39 40 40	51 52
	53 54
Box 3:	Box 4:
55 56	63 64 65 66
57 58	(32A outlets)
59 60	
61 62	
Box 5:	Box 6:
67 67	1 2 3
68 68	4 5 6
	15A independents

Control Box  
(Not to Scale)

**Mains Power**

All channels rated at constant 2kW (except channels 63-66, 73-74 - 5kW).

There is a 63A three-phase supply on the Fly Floor, situated beside a break in the multiplex line from the control desk (Strand D54).

**Sound System Connection**

There is a multicore between the PS (L) Corner and the Control Box (XLR3):

- 16 mic. lines
- 6 returns
- 4 tie lines (two M-F, two F-M)

The 16 mic. lines are also duplicated in the Orchestra Pit (for mics. in orchestra/band).