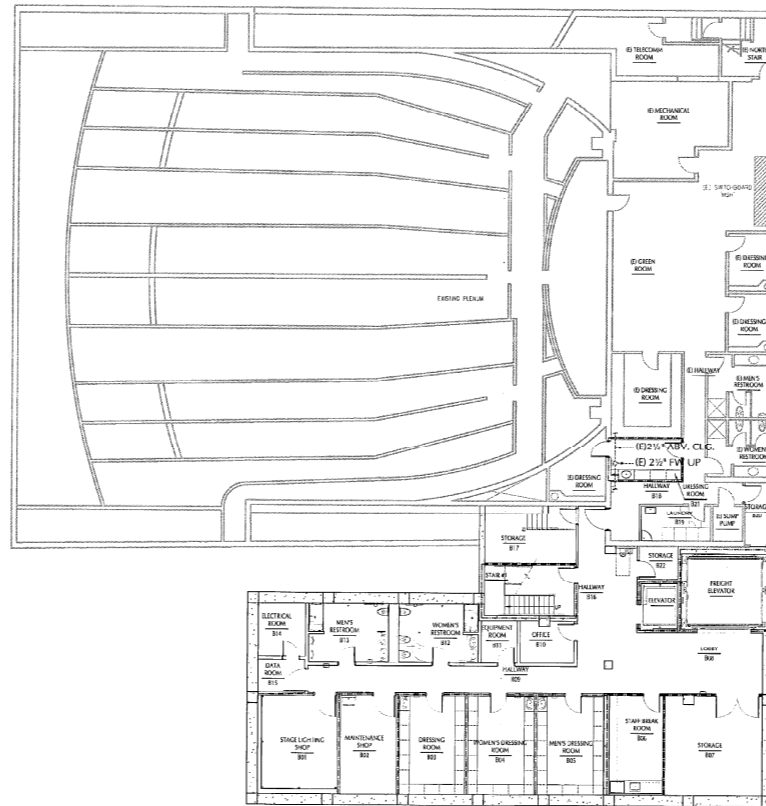
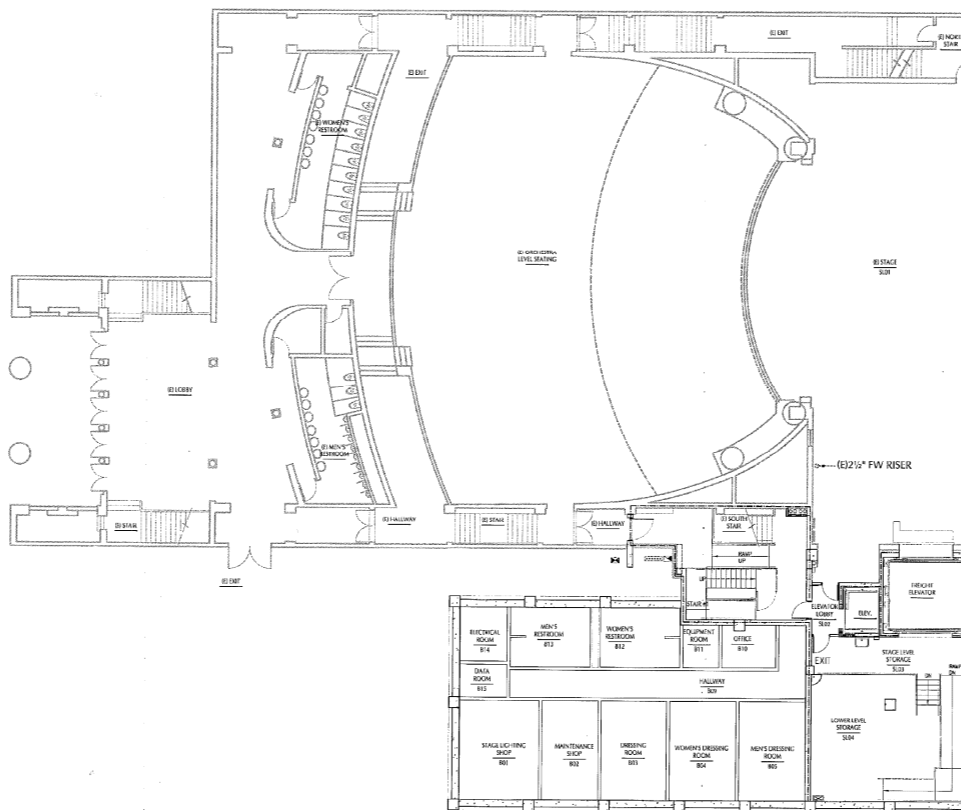


DRAWING NAME: P:\2011\01005000\_GLENDALE ALEX THEATRE\DRAWINGS\100500\_A-113 & A-113.DWG  
 PLOT DATE: MAR 25, 2013 - 10:24AM  
 PLOT BY: JSMAN



**BASEMENT PLAN**  
 1/16" = 1'-0"



**STAGE LEVEL PLAN**  
 1/16" = 1'-0"

**GLENDALE FIRE PREVENTION BUREAU**  
 1000 CALIF ST  
 JUL 12 2013  
 APPROVED BY: [Signature]  
 SUBJECT TO FIELD INSPECTION

CITY OF GLENDALE  
 BUILDING DEPARTMENT  
 APPROVED  
 JUL 12 2013  
 [Signature]

**LEGEND**

- EXISTING WALL TO REMAIN.
- (N) FULL CONCRETE WALL
- (N) METAL STUD WALL
- 1 HOUR RATED WALL
- 2 HOUR RATED WALL

**PMSM**  
**ARCHITECTS**

802 E. COTA STREET, SUITE A  
 SANTA BARBARA, CA 93103  
 TEL 805 963 1955

**CONSULTANTS**

- CIVIL ENGINEER**  
 KPFF CONSULTING ENGINEERS  
 6880 Center Drive, Suite 700  
 Los Angeles, California 90045  
 TEL (310) 665-2800 FAX (310) 665-9075
- MECHANICAL & ELECTRICAL ENGINEER**  
 P2S ENGINEERING, INC.  
 5000 East Spring Street, 8th Floor  
 Long Beach, California 90815  
 TEL (562) 497-2999 FAX (562) 497-2920
- STRUCTURAL ENGINEER**  
 STORK, WOLFE, & ASSOCIATES  
 1124 Nipomo Street, Suite B  
 San Luis Obispo, California 93401  
 TEL (805) 548-8600 FAX (805) 548-8601
- ACOUSTICAL ENGINEER**  
 DOHN AND ASSOCIATES, INC.  
 630 Quintana Road, Suite 312  
 Morro Bay, California 93442  
 TEL (805) 801-3434
- AUDIOVISUAL & SECURITY SYSTEMS CONSULTING**  
 P2S ENGINEERING, INC.  
 5000 East Spring Street, 8th Floor  
 Long Beach, California 90815  
 TEL (562) 497-2999 FAX (562) 497-2920

ARCHITECT STAMP      CONSULTANT STAMP



AGENCY APPROVAL

REVISIONS

THE ARCHITECT DOES NOT REPRESENT THAT THESE PLANS OR THE SPECIFICATIONS ARE SUITABLE FOR ANY SITE OTHER THAN THE ONE FOR WHICH THEY WERE SPECIFICALLY PREPARED. THE ARCHITECT DISCLAIMS RESPONSIBILITY FOR THESE PLANS AND SPECIFICATIONS IF THEY ARE USED IN WHOLE OR IN PART AT ANY OTHER SITE.

PROJECT OWNER & TITLE  
**GLENDALE SUCCESSOR AGENCY**

**ALEX THEATRE EXPANSION**

216 NORTH BRAND BLVD.  
 GLENDALE, CALIFORNIA 91203

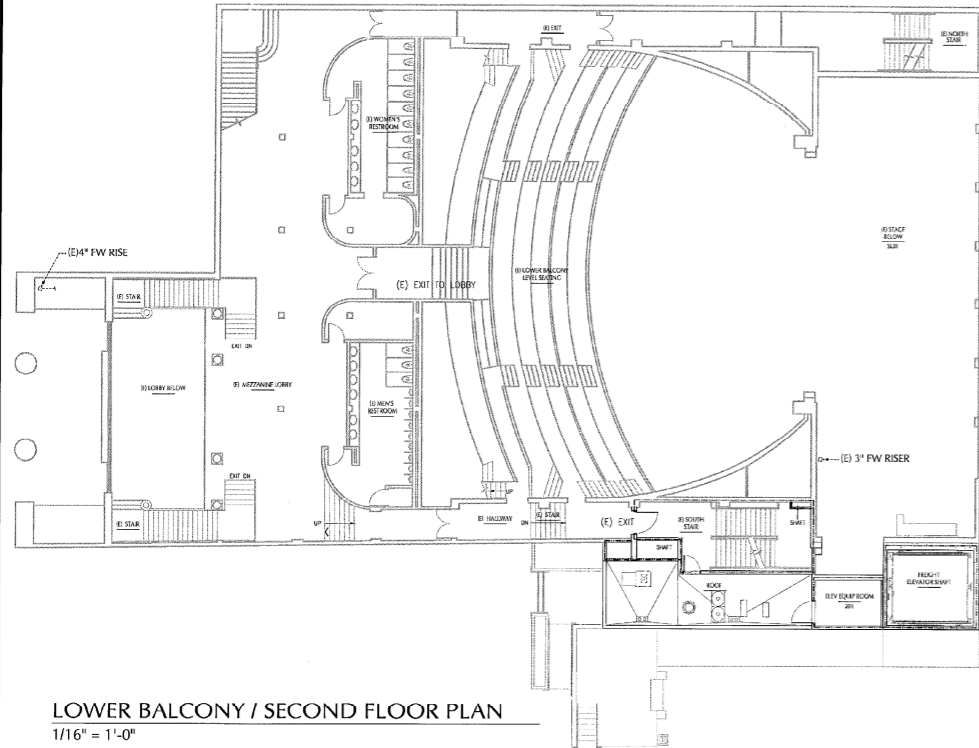
SHEET TITLE  
**BUILDING PLANS SHOWING (E) FIRE SPRINKLER RISERS**

DRAWN BY:      JOB NUMBER: 011005.02

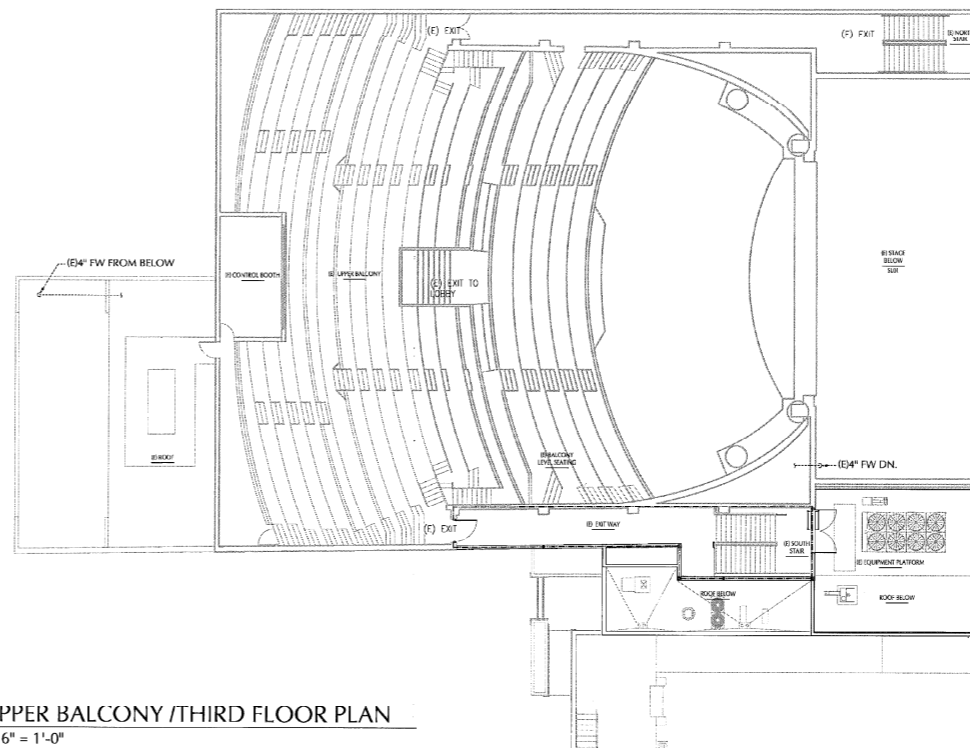
SHEET NO.

**A-113**

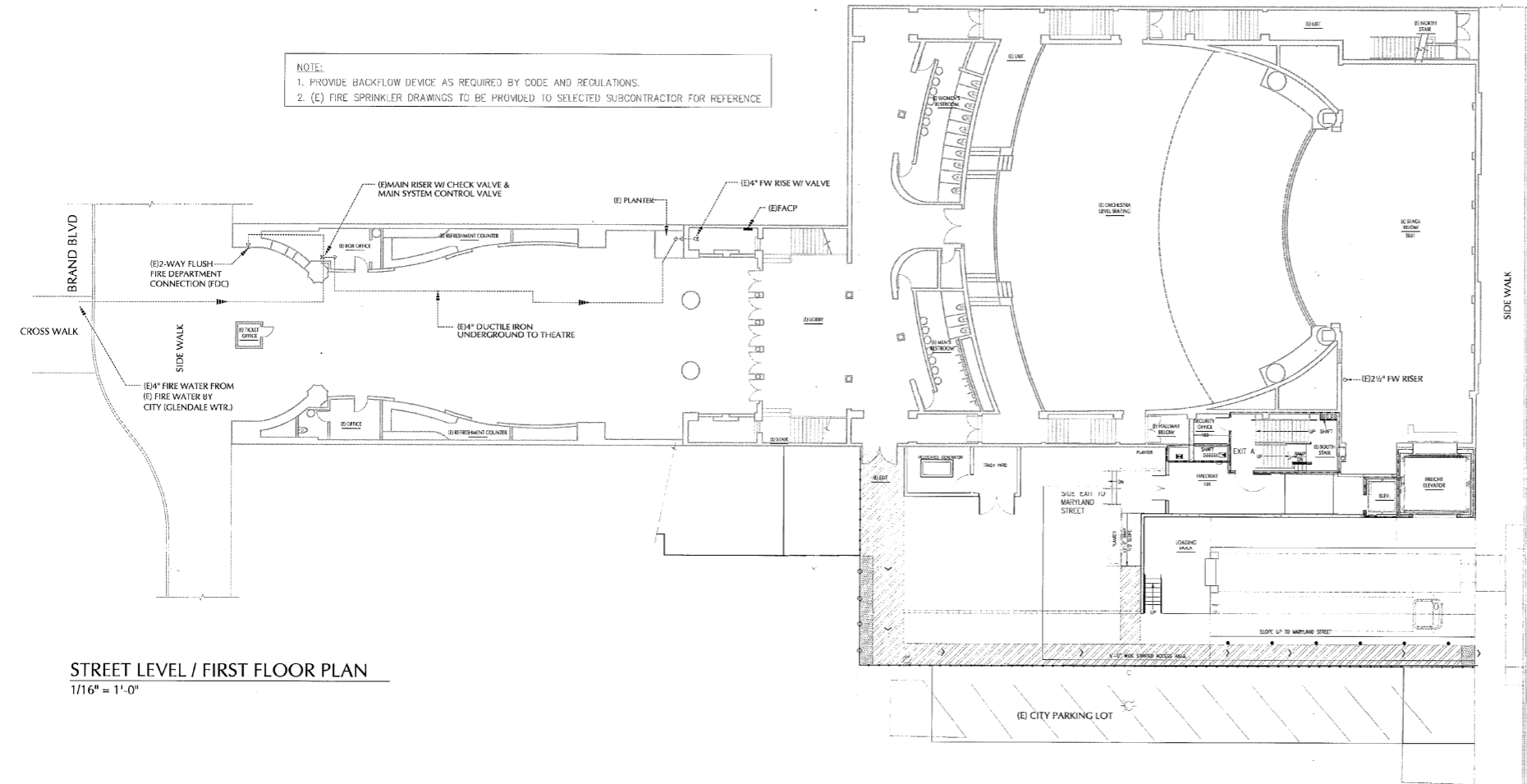
DATE: MARCH 15, 2013



LOWER BALCONY / SECOND FLOOR PLAN  
1/16" = 1'-0"



UPPER BALCONY / THIRD FLOOR PLAN  
1/16" = 1'-0"



STREET LEVEL / FIRST FLOOR PLAN  
1/16" = 1'-0"

GLENDALE FIRE PREVENTION BUREAU  
(62) 168-4216  
JUL 12 2013  
APPROVED BY: [Signature]  
SUBJECT TO FIELD INSPECTION

CITY OF GLENDALE  
BUILDING & SAFETY SECTION  
APPROVED  
JUL 12 2013

- LEGEND**
- EXISTING WALL TO REMAIN.
  - (N) FULL CONCRETE WALL
  - (N) METAL STUD WALL
  - 1 HOUR RATED WALL
  - 2 HOUR RATED WALL

**PMSM**  
**ARCHITECTS**  
802 E. COTA STREET, SUITE A  
SANTA BARBARA, CA 93103  
TEL 805 963 1955

- CONSULTANTS**
- CIVIL ENGINEER**  
KPFF CONSULTING ENGINEERS  
6080 Center Drive, Suite 700  
Los Angeles, California 90045  
TEL (310) 665-2800 FAX (310) 665-9075
- MECHANICAL & ELECTRICAL ENGINEER**  
P2S ENGINEERING, INC.  
5000 East Spring Street, 8th Floor  
Long Beach, California 90815  
TEL (562) 497-2999 FAX (562) 497-2920
- STRUCTURAL ENGINEER**  
STORK, WOLFE, & ASSOCIATES  
1124 Nipomo Street, Suite B  
San Luis Obispo, California 93401  
TEL (805) 548-8600 FAX (805) 548-8601
- ACOUSTICAL ENGINEER**  
JOHN AND ASSOCIATES, INC.  
630 Quintana Road, Suite 312  
Morro Bay, California 93442  
TEL (805) 801-3434
- AUDIOVISUAL & SECURITY SYSTEMS CONSULTING**  
P2S ENGINEERING, INC.  
5000 East Spring Street, 8th Floor  
Long Beach, California 90815  
TEL (562) 497-2999 FAX (562) 497-2920

ARCHITECT STAMP CONSULTANT STAMP

LICENSED ARCHITECT  
ALEX THEATRE  
C-22474  
EXPIRES 10-31-13  
STATE OF CALIFORNIA

AGENCY APPROVAL

REVISIONS

THE ARCHITECT DOES NOT REPRESENT THAT THESE PLANS OR THE SPECIFICATIONS ARE SUITABLE FOR ANY SITE OTHER THAN THE ONE FOR WHICH THEY WERE SPECIFICALLY PREPARED. THE ARCHITECT DISCLAIMS RESPONSIBILITY FOR THESE PLANS AND SPECIFICATIONS IF THEY ARE USED IN WHOLE OR IN PART AT ANY OTHER SITE.

PROJECT OWNER & TITLE  
**GLENDALE SUCCESSOR AGENCY**  
**ALEX THEATRE EXPANSION**  
216 NORTH BRAND BLVD.  
GLENDALE, CALIFORNIA 91203

SHEET TITLE  
**BUILDING PLANS SHOWING (E) FIRE SPRINKLER RISERS**

DRAWN BY: [Signature] JOB NUMBER: 011005.02

SHEET NO.  
**A-114**  
DATE: MARCH 15, 2013

DRAWING NAME: H:\2010\100500 GLENDALE ALEX THEATRE\ADMIN\100500\_A-113 & A-114.rvt  
PLOT DATE: Mar 27, 2013 10:26:47  
PLOT BY: ADMIN