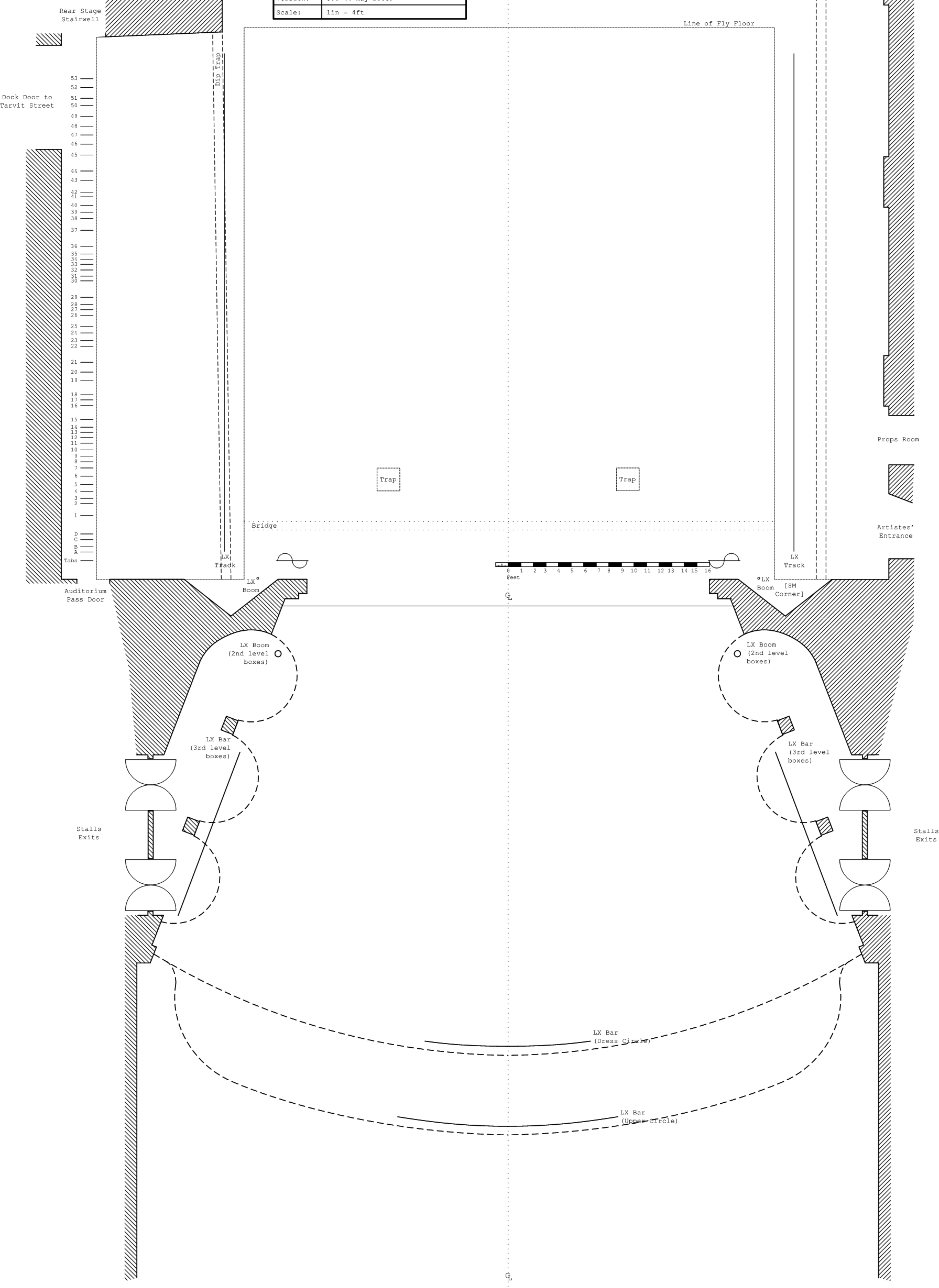


Project:	"ProjectName"
Company:	CompanyName
Drawing:	Ground Plan
Venue:	King's Theatre, Edinburgh
Drawn:	Mike Hume
Version:	3.0 (4 May 2003)
Scale:	1in = 4ft



Rear Stage Stairwell

Dock Door to Tarvit Street

53

52

51

50

49

48

47

46

45

44

43

42

41

40

39

38

37

36

35

34

33

32

31

30

29

28

27

26

25

24

23

22

21

20

19

18

17

16

15

14

13

12

11

10

9

8

7

6

5

4

3

2

1

D

C

B

A

Tab

0 1 2 3 4 5 6 7 8 9 10 11 12 13 14 15 16

feet

Bridge

Line of Fly Floor

Trap

Trap

Dip Trap

Dip Trap

LX Track

LX Track

LX Boom

LX Boom [SM Corner]

LX Boom (2nd level boxes)

LX Boom (2nd level boxes)

LX Bar (3rd level boxes)

LX Bar (3rd level boxes)

Stalls Exits

Stalls Exits

LX Bar (Dress Circle)

LX Bar (Upper Circle)

Auditorium Pass Door

Props Room

Artistes' Entrance